

PARISH ANNUAL ASSEMBLY

TUESDAY 23RD MAY 2023

The Centre, (Congregational Church, East Street) commencing a 7.00 pm

AGENDA

1. Introduction
2. Minutes
To receive the minutes of the Annual Assembly held on 8th April 2022 (Attached)
3. Parish Council Annual Report
4. Maldon Local Development Plan/Tollesbury Neighbourhood Plan
5. Development in the Village
6. HART (Housing Action by Residents of Tollesbury)
7. Tollesbury Climate Partnership
8. Tollesbury Village Larder
9. Tailler's Charity
10. 20's Plenty Campaign
11. Q&A Session

M. Curtis

Clerk to the Parish Council

This meeting is YOUR opportunity to raise any matters of concern about YOUR village.

MINUTES of the 127th Annual Assembly held in The Centre on Friday 8th April 2022 commencing at 7.00 pm.

Present: Parish Councillors - Cllr. S. Plater (Chairman, Tollesbury Parish Council), Cllr T Lowther (Vice-Chairman), Cllr M Bell, Cllr R Clare, Cllr L Goldie, Cllr S Hawes, Cllr J Rogers, Cllr A St Joseph
District Councillor Thompson
Michelle Curtis - Clerk to Parish Council
Mark Dixon and Richard Taylor – Mersea Harbour Protection Trust (MHPT)
Ian Marwood – Tollesbury Climate Partnership (TCP)
Kieran Alexander – RSPB
26 members of the public

1. Introduction

The Chairman made a statement to the Assembly explaining the nature of the meeting. It was a meeting of parishioners; by law, if the Chairman of the Parish Council was present, he must preside at the meeting; the role of the Parish Council was to facilitate the discussion; by convention, the Minutes of the Meeting was taken by the Clerk to the Parish Council.

Apologies for absence were received from County Councillor Durham and District Councillor Stephens.

2. Minutes of the Annual Assembly on 18th May 2021

The Minutes of the 126th Annual Assembly held on 18th May 2021 were approved as a true record of the meeting.

3. Mersea Harbour Protection Trust (MHPT)

Mark Dixon, Trustee MHPT, gave a PowerPoint presentation (Appendix A) on the recharge work carried out by the MHPT to prepare Mersea Harbour and Tollesbury for climate change.

The project has taken seven years to complete and cost £1.9m.

More information on the project is available at www.savemerseaharbour.org.

4. Tollesbury Climate Partnership (TCP)

Ian Marwood, TCP, gave a PowerPoint presentation (Appendix B).

Ian reminded those present to join up and become members of TCP.

Ian asked the following questions on behalf of TCP:

What are the Council's intentions in the following areas?

- 1) Initiatives to promote cycling
- 2) Planning applications and climate change considerations
- 3) Neighbourhood Plan and climate change considerations
- 4) Community Energy Schemes
- 5) Community Buses
- 6) Rising sea level protection/mitigation

The Chairman stated the Parish Council appreciates the hard work of TCP. The Parish Council recognised climate change was high on the agenda and organised the first meeting to bring together more people to utilise the expertise in the village. TCP is independent of the Parish Council. The Parish Council has supported the group by giving grants.

In response to the questions from TCP, the Chairman answered as follows:

- 1) The Parish Council would be willing to consider any initiatives from TCP on cycling initiatives.
- 2) Planning is controlled by planning legislation and the Local Development Plan (LDP). The LDP is currently being reviewed, and climate change is considered substantially much higher than the existing LDP.
- 3) The Tollesbury Neighbourhood Plan is currently on hold due to the Maldon District Council LDP being reviewed.
- 4) Community Energy Schemes – The Parish Council has not considered this.
- 5) Community Buses – The Parish Council has not considered this, but the Parish Council would welcome any ideas
- 6) Rising sea level protection/mitigation – In October 2021, the Environment Agency produced new guidance for planners that should be considered.

The Chairman stated that due to the existing commitments of the Parish Council, Councillors could not take on the additional responsibilities of the group. However, some Parish Councillors are on TCP.

Cllr St Joseph stated that the central role of the Parish Council is to try and push developers when they put forward applications to make houses as carbon neutral as possible. The Parish Council needs to work closely with Maldon District Council (MDC) to channel our thoughts to a higher level.

District Councillor Thompson stated that the LDP is under review and climate change is high on the agenda. MDC declared a climate emergency some time ago.

5. Annual Report

The Chairman gave a PowerPoint Presentation giving an overview of the work carried out by the Parish Council's report of the past year (Appendix C).

Finance

Accounts for 2020/21 were audited with no adverse comments.

Accounts for 2021/22 are being finalised and inspected by the Internal Auditor before the Annual Governance Accounting Return is submitted to the External Auditor PKF Littlejohn.

Precept – For 2022/23, the Precept was set at £92,599.50. When compared to the 2021/22 precept, this was an increase of £2,697.50. This resulted in an increase of £1.09 (1.19%) per household (based on a Band D property).

6. Neighbourhood Plan

The Chairman reported:

In 2019 there was a change in personnel at MDC resulting in a change of advice and direction which resulted in the NPSG having to rework the plan.

In 2020 Covid reduced the opportunity to work on the Neighbourhood Plan.

In 2021 there were rumours that there were some issues with the MDC LDP, particularly the housing element, and it was likely to be reviewed.

In 2022 MDC confirmed that their LDP was no longer robust and was being reviewed. A call for sites was carried out, and consultation had also recently occurred. Currently, MDC has no LDP in place.

The NPSG has met with the newly appointed MDC Lead Specialist Anne Altoft-Shorland, Local Plans, Strategy, Performance and Governance Directorate to discuss the Tollesbury Neighbourhood Plan. With the current position of the LDP, Anne has suggested that the NPSG put the Tollesbury Neighbourhood Plan on hold until better guidance is received from MDC. Anne is happy to help the NPSG with the Neighbourhood Plan process.

7. Youth Group Initiatives

Cllr Rogers reported that the Youth working was borne out of the lockdown conditions where Tollesbury young people were really at a loose end and, in some cases, pushing boundaries. At times, tensions were running quite high in the village, and the community Facebook page was where many were venting their frustrations. Everyone was missing their usual community engagement, and this became a very public avenue for venting frustrations and could, at times, spill over into anger. It was felt that the conditions were amplifying both the behaviour of young people and the reactions to it on social media.

The Parish Council set up a Youth Working Group (YWG) to identify the issues facing young people that could be contributing to the increase in behaviour-related incidents and offer assistance to those young people and their families in difficult times. Initially, this consisted of contacting the families of those identified as engaging in concerning behaviour, offering assistance to signpost to support networks and providing parents with the opportunity to speak to their young people about how their behaviour was affecting their neighbours and friends. Instances of any excessive behaviour were recommended to report in the usual way via 101.

Once lockdown conditions eased, the YWG looked at various issues they thought might be faced by young people in a village-like Tollesbury, which has a very active and supportive community, but often limited social avenues for young people along with public transport limitations which impacted both social and career/employment aspects. The YWG felt that it would be good to consult with our young people to discover what support could be offered to them as a village.

The YWG also continued to work closely with Essex Youth Service for advice, Police and PCSOs for assistance, and community groups for external support and opportunities.

A consultation evening was arranged in November and was well attended. Drinks, snacks and hot food were provided, and the Essex Youth Service attended for support and advice. The YWG managed to engage with some of the young people who were part of a familiar group and other young people living in the village. Ideas were brainstormed with the youth and parents who also attended—lots of positive feedback

and great views. The main take-aways from the consultation evening were that young people wanted somewhere to be able to 'be' with their friends. Not necessarily with organised activities, but a place to chill out and hang out together. There was also interest in working with local businesses to gain skills or experience, and lots of suggestions for some whole community activities that the young people could get involved in.

As a result of our consultation evening, the YWG were able to revisit the idea of The Hangout, a project that had been in the pipeline for some time but had stalled due to lockdowns.

- Funding of £1,656.20 has been secured from Essex Youth Services
- The Parish Council agreed to the use of the Pavilion as a base
- Purchasing equipment and resources needed to set up the environment
- Received donated items from residents
- Approx. 18 residents have volunteered to assist with running it and shared their skill sets with us
- Contacting volunteers and inviting them to an introduction evening where we can look at training needs and checks required
- Still need to promote and advertise locally

Where this is concerned, more time has passed than first anticipated, and the YWG is disappointed they have not kept the early momentum going. With jobs/families/covid and day to day responsibilities, it has been a struggle to keep pace lately, and we apologise to those who have contacted us regarding volunteering. The YWG is getting back on track now, so we hope to be in touch with them shortly.

The YWG has discussed work experiences and progress has been made with a careers support facility. Local businesses have been very supportive of the idea, and many have come forward to suggest apprenticeships. A charity grant and donations will assist this; this is envisioned as a supplement to any available opportunities in schools. The objective is specifically to help young people in Tollesbury who would generally rely on public transport to engage with work experience. A local business is interested in exploring ways for work experience which could lead to a possible engineering apprenticeship.

The Tailler Charity has lent support, in principle, to this project, but no funds have been drawn on yet.

Work experience will be promoted once the Hangout is up and running, and we would want to engage locals in a mentorship scheme to support this.

Once the Hangout is operational, the YWG would like to explore the possibility of providing financial assistance for adventure activities. This would involve bursaries being found to enable young people from Tollesbury to experience opportunities at sea in various charity-owned sailing craft in Essex. These opportunities will allow young people to apply to take part, regardless of their finances. Dates will be published; some will possibly coincide with the Festival of the Sea in June, part of celebrations of The Queen's Platinum Jubilee. Applications will be invited.

It is worth noting that the Police have been proactive and have assisted with patrols and a couple of warnings, which have encouraged improved behaviours.

The original remit dealt with an issue that arose during a challenging but temporary situation; however, the YWG recognised that some of the projects are longer-term objectives. The YWG will meet to discuss the next steps and which areas to focus on in the longer term, which projects will be one-off events and where the YWG can step back and facilitate community-led activities.

8. Queens Jubilee Celebrations

Cllr Clare reported that a group of volunteers had come together for the Queens Jubilee Celebrations.

The proposed schedule is as follows:

- Thursday 2nd June – Lighting the beacon, unveiling the plaque for tree planting and fireworks at the Recreation Ground – the Royal British Legion is leading this.
- Friday 3rd June – Street Parties
- Saturday 4th June – AM – Water based activities (raft race) at Woodup Pool and PM live music at the Royal British Legion and The Kings Head.
- Sunday 5th June – the Tollesbury Picnic will be held on the school field. A resident has also sponsored lunch for those who attend the WRVS.

The event will need a budget of approx. £1,000, and a crowdfunding page is being set up. Any donations from residents would be gratefully appreciated.

9. Other Village Matters

Residents raised the following items in advance of the meeting:

1) Parking/Traffic Speeding in the Village

The Chairman reported that the Parish Council is aware of the various issues around the village.

The Parish Council is working with District Councillor Stephens, and an application will be submitted to the Local Highways Panel for consideration. The application includes a 20mph speed limit and calming measures for speeding on West Street and Woodrolfe Road.

Regarding parking, unless a private landowner comes forward with space, and a willingness to allow parking, there is no easy solution. The Parish Council would welcome any suggestions to address this issue.

Residents are urged to email County Councillor Durham at Essex County Council (ECC) to express their concerns regarding the highway issues in Tollesbury.

2) Location of Portaloos – Woodup Pool

The Chairman reported that the Woodup Pool Committee are discussing the feasibility of relocating the portaloos.

3) Road Surfaces

The Chairman advised that ECC would only repair potholes if they met the criteria for repairs.

The Chairman reminded residents to report any highway issues on the ECC website Online Reporting Tool and email County Councillor Durham.

4) Adult Gym – Recreation Ground

The Chairman advised he thought the Parish Council would support an outdoor gym but would need the village to assist with funding for any new equipment.

10. Q & A Session

There were no further questions from the members of the public.

The Chairman thanked everyone for attending the meeting.

The Chairman closed the meeting at 9.38 pm.

Signed.....

Date:.....

MERSEA HARBOUR PROTECTION TRUST

PREPARING MERSEA HARBOUR AND
TOLLESBURY FOR CLIMATE CHANGE



TODAYS TALK

- THE PROBLEM
- THE OBJECTIVE
- THE OPTIONS
- THE SOLUTION
- THE PARTNERSHIP APPROACH
- WHAT WAS NEEDED
- HOW WAS IT DONE



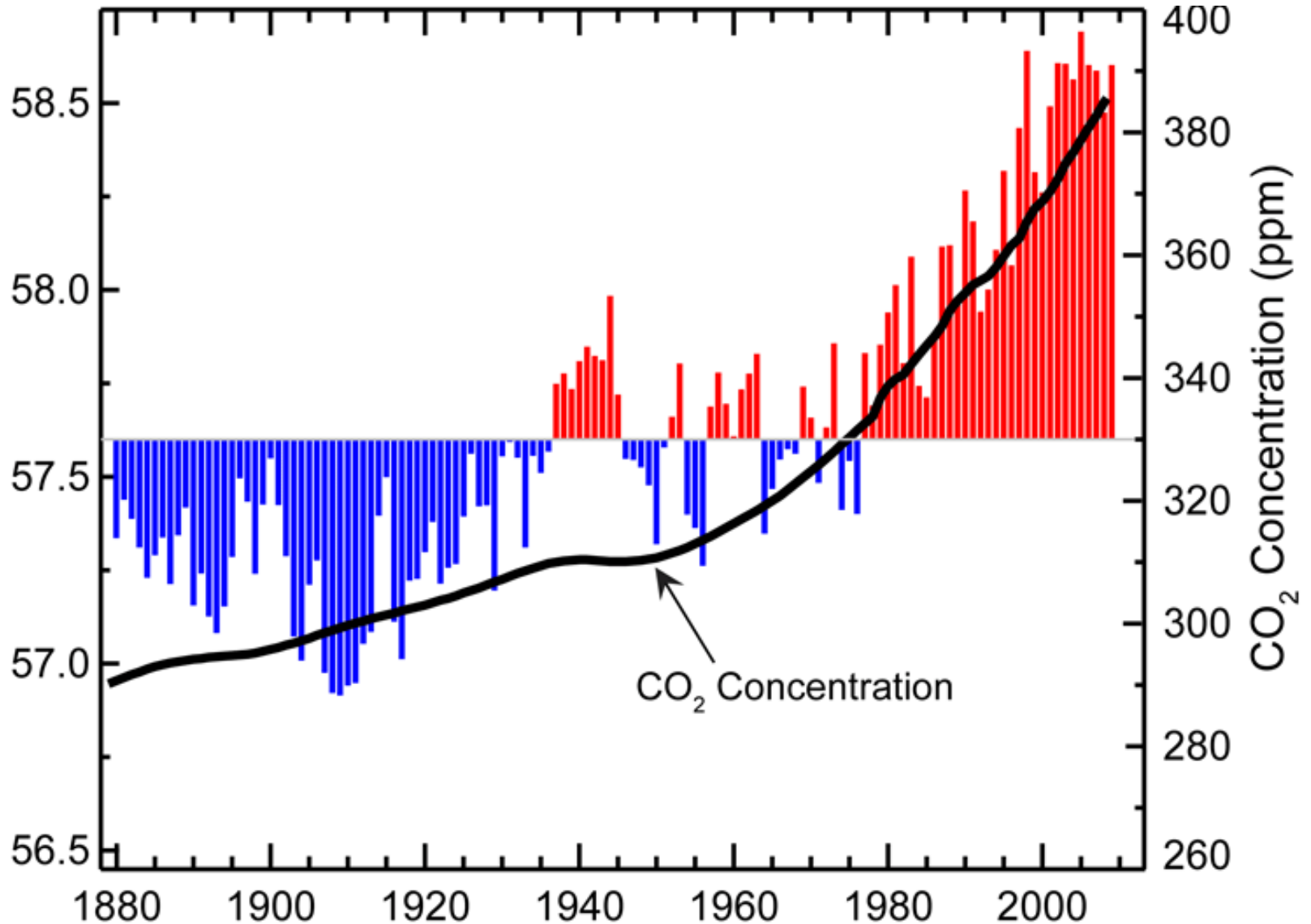
WHAT IS MERSEA HARBOUR

And what is the threat?

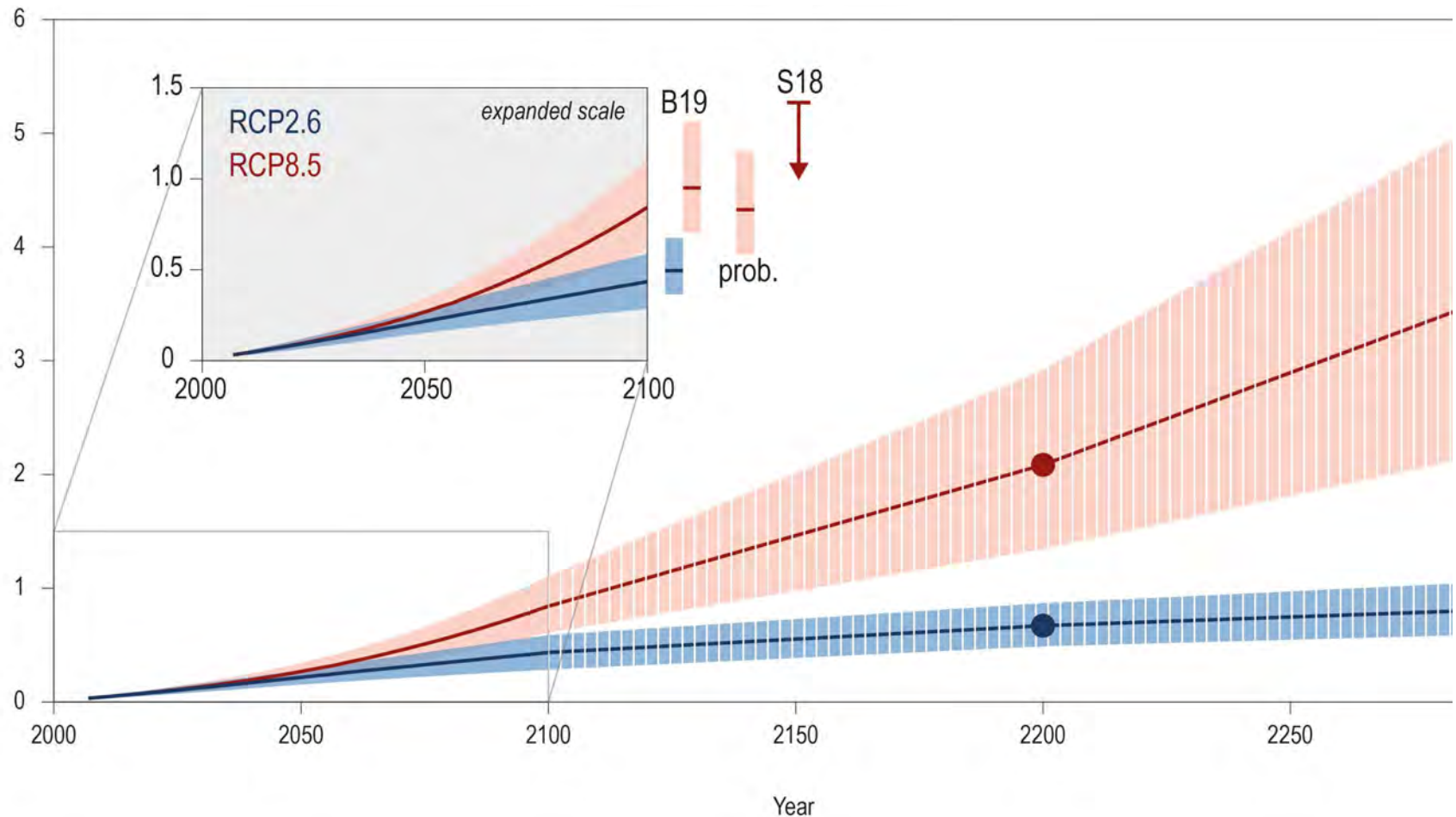


WHAT IS THE PROBLEM?

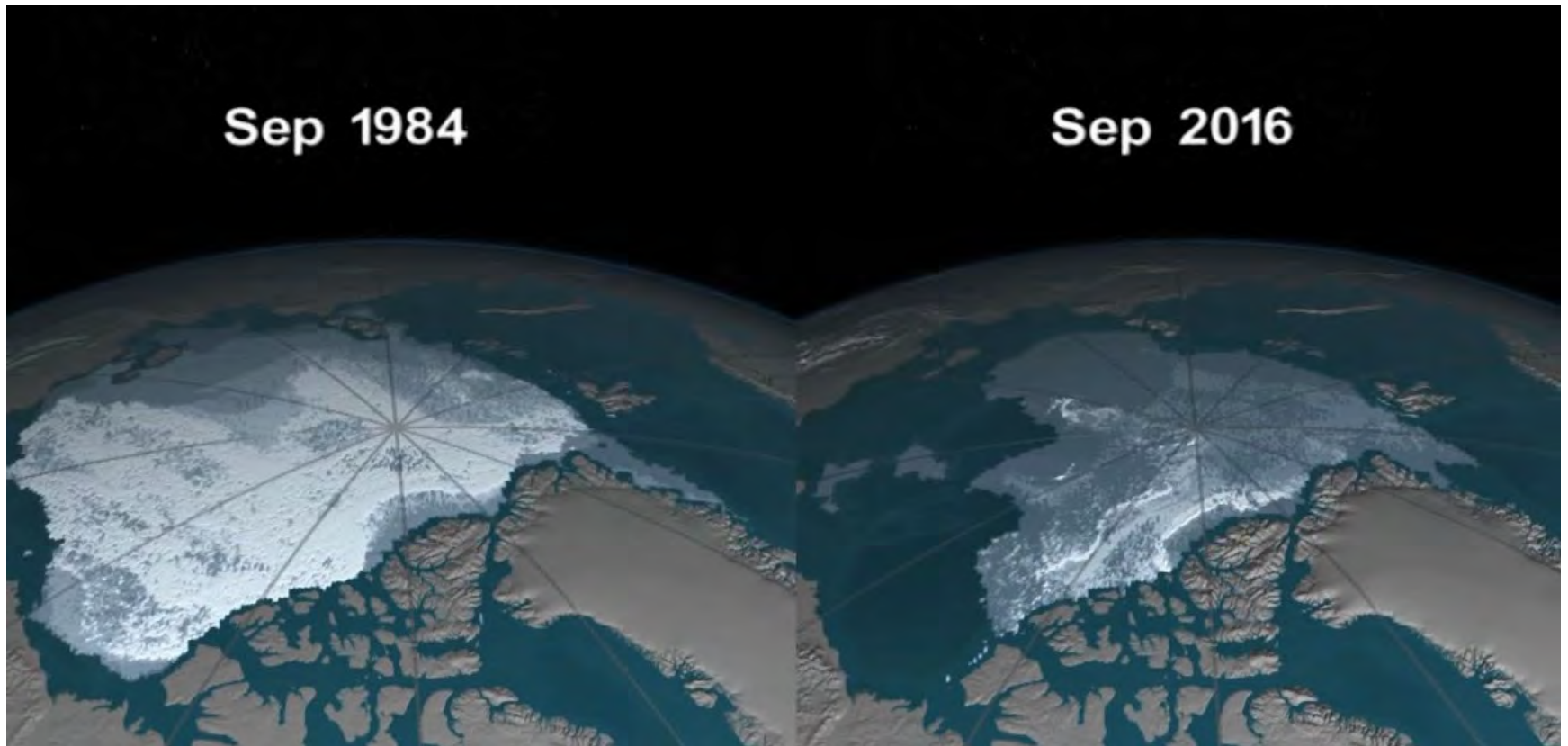
BURNING OF CARBONS IS MAKING THE PLANET WARMER – climate change



PROBLEM - A WARMER PLANET CAUSES SEA LEVELS TO RISE BY THERMAL EXPANSION AND GLACIERS MELTING — BY 2100 A 1M RISE TO MERSEA HARBOUR (NB PREDICTIONS KEEP GETTING WORSE)

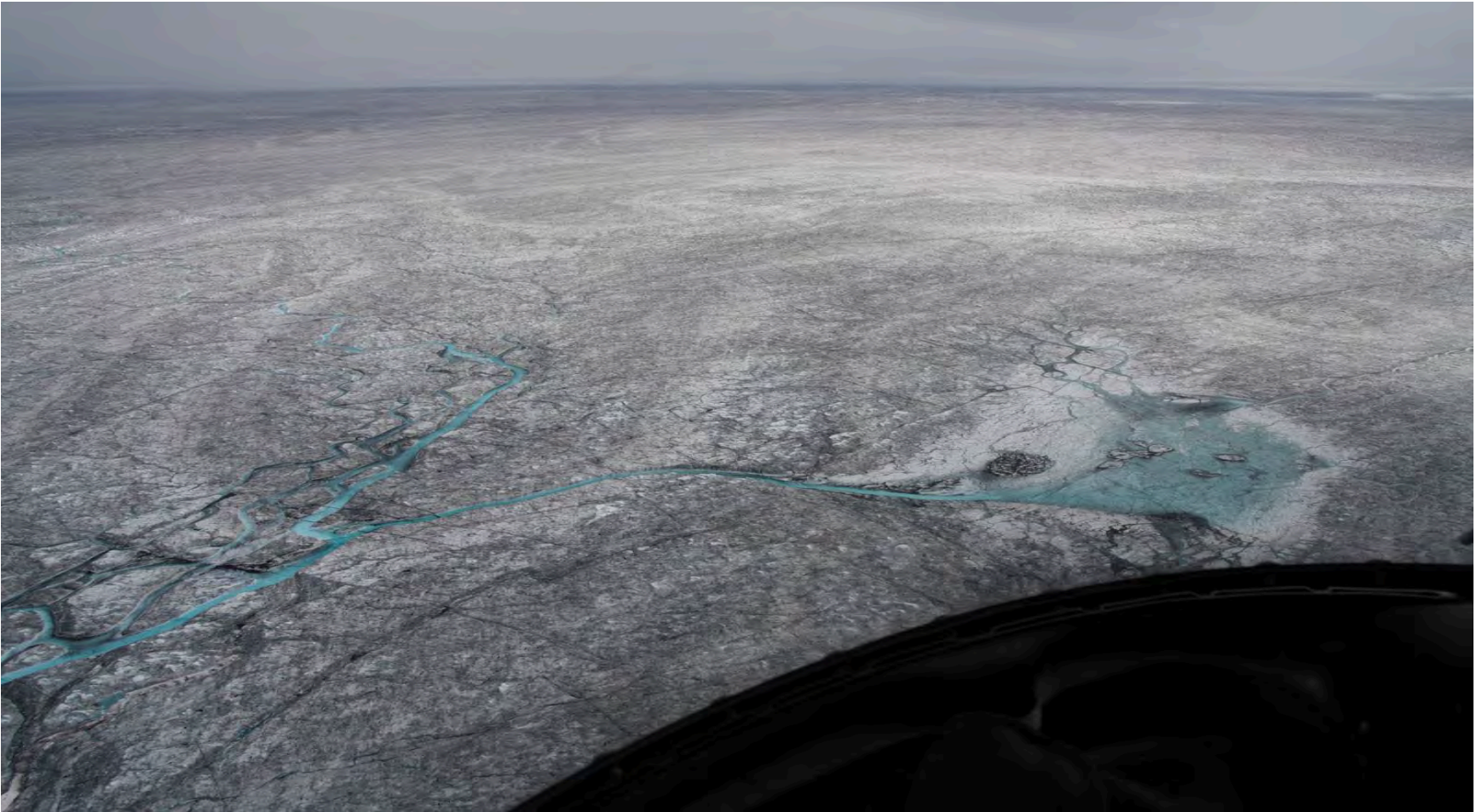


PROBLEM - GLACIERS MELTING – Accelerating as algae now grows on the ice and soaks up the heat



ALGAE GROWING ON GREENLAND ICE SHEETS

This darkens the colour of the ice and the sun's heat is absorbed accelerating melting. When it all melts sea levels will rise by 7m.



PROBLEM - SEA LEVEL RISE IMPACTS

- DEEPER WATER ALLOWS BIGGER WAVES
- BIGGER WAVES ALLOW FASTER EROSION
- CLIMATE CHANGE WILL ALSO LEAD TO MORE STORM WINDS
- WHEN COB MARSH, PACKING MARSH AND OLD HALL POINT WASH AWAY THE HUGE INCREASE IN WAVE ACTION DESTROYS MERSEA HARBOUR
- COB MARSH HAS ERODED FROM 32 TO 16 ACRES IN THE LAST 60 YEARS
- OLD HALL POINT 40 ACRES TO 18 ACRES IN THE LAST 60 YEARS
- IT WAS ESTIMATED THAT THE HARBOUR ONLY HAD 70 YEARS LEFT



OBJECTIVE

Had to comply with UK Legislation for 5 conservation designations which included protection of rare birds and native oysters

- THERE IS NO LAW THAT SAYS THAT PEOPLE AND PROPERTY HAVE TO BE PROTECTED FROM FLOODING BUT RARE CREATURES *ARE* LEGALLY PROTECTED
- SO USE UK AND INTERNATIONAL LAW TO GET THE CONSENTS AND RAISE THE MONEY
- THIS MEANT THAT THE **OBJECTIVE** WAS TO PROTECT EXISTING NATIVE OYSTER BEDS AND PROVIDE NEW NESTING SITES FOR RARE BIRDS



BUT OBJECTIVES HAVE RESIDUAL OUTCOMES

RESIDUAL OUTCOMES (NOTE – not the objective):

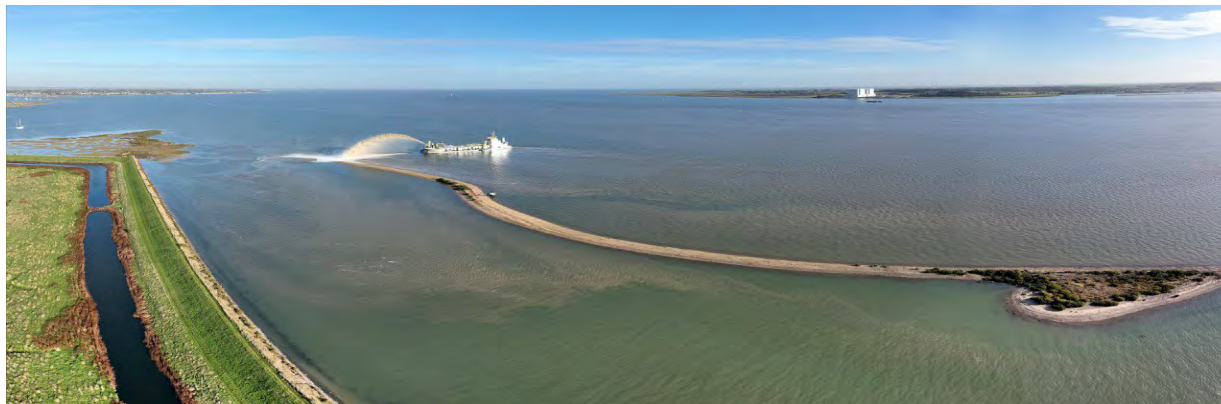
- To preserve the long term viability of the harbour and adjacent navigation channels for maritime commercial and leisure activities.
- To preserve the character of the Mersea waterside area.

*(BUT what was also important was what we were **NOT** going to do.)*



OPTIONS TO STOP THE EROSION

- DO NOTHING – WHAT FINANCIAL COST TO THE NATURAL AND BUILT ENVIRONMENT – the base against which all costs have to be measured
- FIXED WAVEBREAK OF ROCK OR OLD STEEL LIGHTERS (Did not pass environmental legislation requirements and very, very, expensive)
- GEOTUBES PUMPED WITH SAND/MUD FROM NEARBY (Environmental damage, visually unacceptable, expensive to maintain, navigation hazard if or when they split open)
- RECHARGE WITH A MIX OF SAND AND GRAVEL (Environmentally acceptable, material available from Harwich navigation channel, *low risk as been done before at Mersea in 1998*, will re-form as sea level rises, ideal for birds and oysters, looks natural)



DONE BEFORE IN 1998



THE PARTNERSHIP APPROACH - Hemingway “No matter how, a man alone ain’t got no bloody chance”

- The MHPT is a very small local charity with just a few trustees
- It relies on a volunteer no-fee basis
- If the recharge project was to succeed it needed “heavy weight” partners to add financial commitment and support powerful arguments
- The potential partners to want the same things though for different reasons **with the MHPT responsible for obtaining all consents**
- The partners are the Harwich Haven Authority (the source of the gravel and sands from navigation channel dredging and marine construction skills), the Environment Agency (flood defence) and RSPB (conservation)



WHAT WAS NEEDED

All to professional standards

- BUSINESS CASE TO TREASURY STANDARDS
- PROJECT PLAN (critical path programme, risk analysis and management, finance planning, cash flow etc)
- PUBLIC TALKS, EXHIBITIONS AND A COMMUNICATION STRATEGY
- PREMONITORING OF THE AREA AFFECTED – tides, sediments, current speeds, birds, invertebrates, plants, seabed level surveys, archeology, pollutants, shellfish etc
- EMPLOYING SPECIALIST CONTRACTORS TO DO THE RESEARCH/ MONITORING/ANALYSIS AND PRODUCING THE REQUIRED LEGAL DOCUMENTS FOR CONSENT APPLICATION
- A CONSENT COST OF £70K
- MEETINGS WITH OUR PARTNERS AND LEGAL ADVICE
- BUSINESS CASE TO MEET ENVIRONMENT AGENCY REQUIREMENTS
- **TOTAL TIME TAKEN 6 YEARS**

WHAT WAS NEEDED

Meeting those with concerns and objections



- IT BLOCKS MY NAVIGATION RIGHT.
- DISTURBED MUD SMOTHERS MY OYSTER LAYINGS.
- NESTING BIRDS STOP MY RIGHT TO LAND.
- IT KILLS ALL THE CREATURES IN THE MUD.
- IT KILLS THE VEGETATION ON THE SALTINGS.

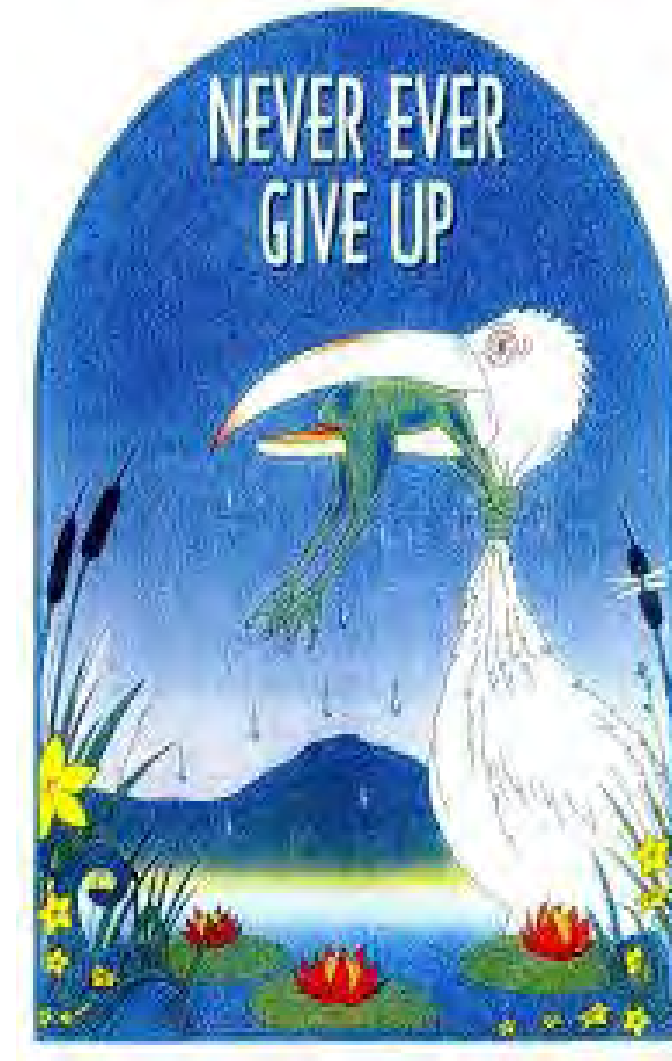
WHAT WAS NEEDED



- THE MHPT HAD TO MEET A *VERY* RIGOROUS LEGAL PROCESS.
- WE ACCOMPLISHED THIS.
- *BUT THERE WERE TIMES WHEN WE FELT AT THE BOTTOM OF A MESSY PILE!*

WHAT WAS NEEDED

Tenacity!



WHAT WAS NEEDED – A LOT OF MONEY

- £70K RAISED LOCALLY TO OBTAIN THE CONSENTS (including Essex Communities Foundation)
- £250K ***UNCHARGED TIME*** FROM MHPT VOLUNTEERS
- £30K FROM RSPB FOR ASSISTANCE WITH THE BIRD MONITORING AND REPORTING
- £300K FROM THE ENVIRONMENT AGENCY (EA) TO HELP WITH CONSTRUCTION COSTS
- £1200K FROM HARWICH HAVEN AUTHORITY TO HELP WITH CONSTRUCTION COSTS
- £56K FROM THE EA FOR 5 YEARS POST PLACEMENT MONITORING
- **TOTAL £1,900,000**

HOW WAS IT DONE – WHERE AND HOW MUCH MATERIAL
5K m3 to Packing Marsh and Tollesbury Wick, 40k m3 to Old Hall Point, 48k m3 to Cob. Total 98k m3 or 240,000 tonnes or 12,000 lorry loads



WHERE WAS THE MATERIAL FROM

NEW DEEPER NAVIGATION CHANNEL TO THE PORTS OF FELIXSTOWE
AND HARWICH (this material very clean glacial outwash from last Ice Age)



HOW WAS IT DONE — PRE RECHARGE WORKS

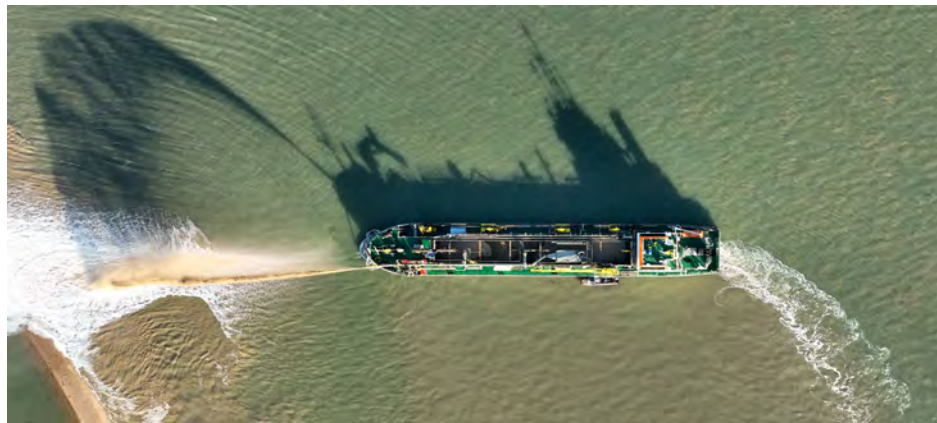
CONTRACTS HAD TO BE LET TO BUILD BRUSHWOOD FENCES ON PACKING MARSH AND COB MARSH TO MANAGE POSSIBLE MOVEMENT OF RECHARGE MATERIAL DURING BIG STORMS.

THIS WAS JUST ONE OF THE CONSENT CONDITIONS.



HOW IT WAS DONE

- PACKING MARSH RECEIVED THE FIRST CARGO BY “RAINBOW DISCHARGE” ON 5 NOVEMBER 2021
- THIS SAME METHOD WAS USED AT TOLLESBURY WICK
- EACH SITE HAD 5,000 M3 (12,000 TONNES) PLACED, 6 CARGOES TO EACH SITE
- THE DREDGER WAS THE *SOSPAN DAU*, WHICH THEN HAD TO GO ONTO OTHER CONTRACTS
- SHE WAS REPLACED BY THE *SCALD*, WHICH PUMPED THE RECHARGE VIA A FLOATING PIPELINE WITH THE HELP OF SHIP *ANNEKE*
- PLACING BY FLOATING PIPELINE IS MUCH MORE ACCURATE
- PIPELINE 500MM DIAMETER, 300M LONG AND DISCHARGE RATE OF 20 M3 OR 45 TONNE PER MINUTE



PACKING MARSH IN DECEMBER 2021

Recharge Complete



HOW IT WAS DONE

FLOATING PIPELINE TO COB MARSH AND OLD HALL POINT

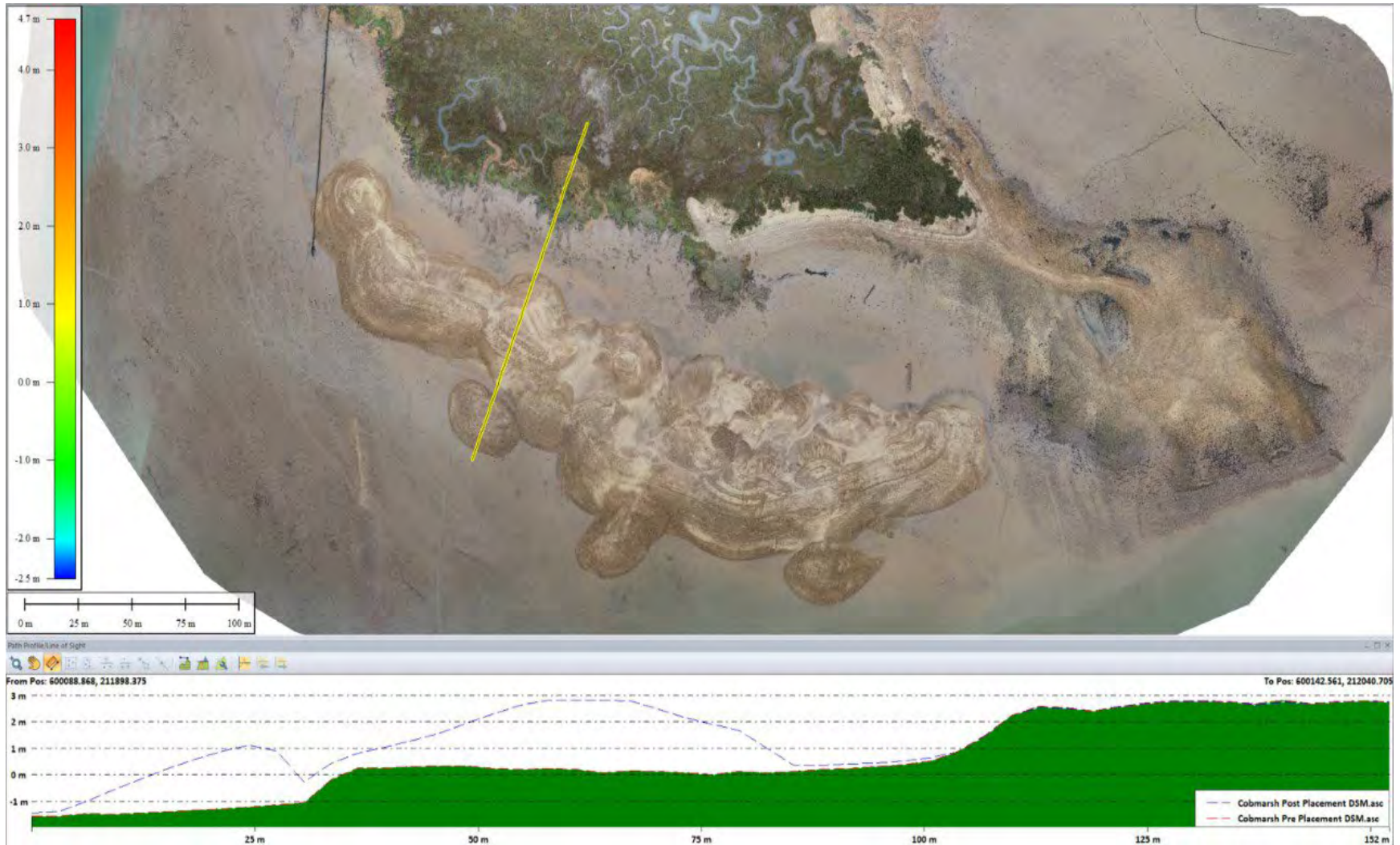


COB MARSH IN JANUARY 2022

Recharge Complete



COB MARSH RECHARGE CROSS SECTION SURVEY (yellow line C/S, green is pre recharge, dotted line recharge material as placed)



COB MARSH RECHARGE



AFTER THE STORM – Packing Marsh



AFTER THE STORM – Tollesbury Wick



AFTER THE STORM – Old Hall Point



AFTER THE STORM – Cob Marsh





SUMMARY

- MERSEA HARBOUR AS WE KNOW IT, ONLY HAD 70 YEARS LEFT BEFORE INCREASING WAVE ACTION FROM CLIMATE CHANGE MADE IT UNUSABLE
- THE SOLUTION, AFTER 7 YEARS WORK TO GET ALL THE CONSENTS AND RAISE OVER £1 MILLION, WAS TO BUILD NEW OFF-SHORE PROTECTING BEACHES USING 240,000 TONNES OF SAND AND GRAVEL
- ***THIS WORK IS NOW DONE. COMPLETED JANUARY 2022***
- THE PRIMARY PURPOSE OF THE BEACHES IS FOR THE BIRDS
- THE RSPB WILL TAKE OVER FUTURE MANAGEMENT OF THE BIRDS ONLY
- LETS SAY “THANK YOU” TO THE BIRDS. (As sea levels rise they will have very few places left to have their children and live their lives)

TOLLESBURY MAIN CONCERN

RECHARGE COULD CAUSE THE SOUTH CHANNEL TO SILT UP

Reason 1 – decline of Nass and Cob Marsh Spits



Reason 2 – colonisation by tube worms



QUESTIONS?

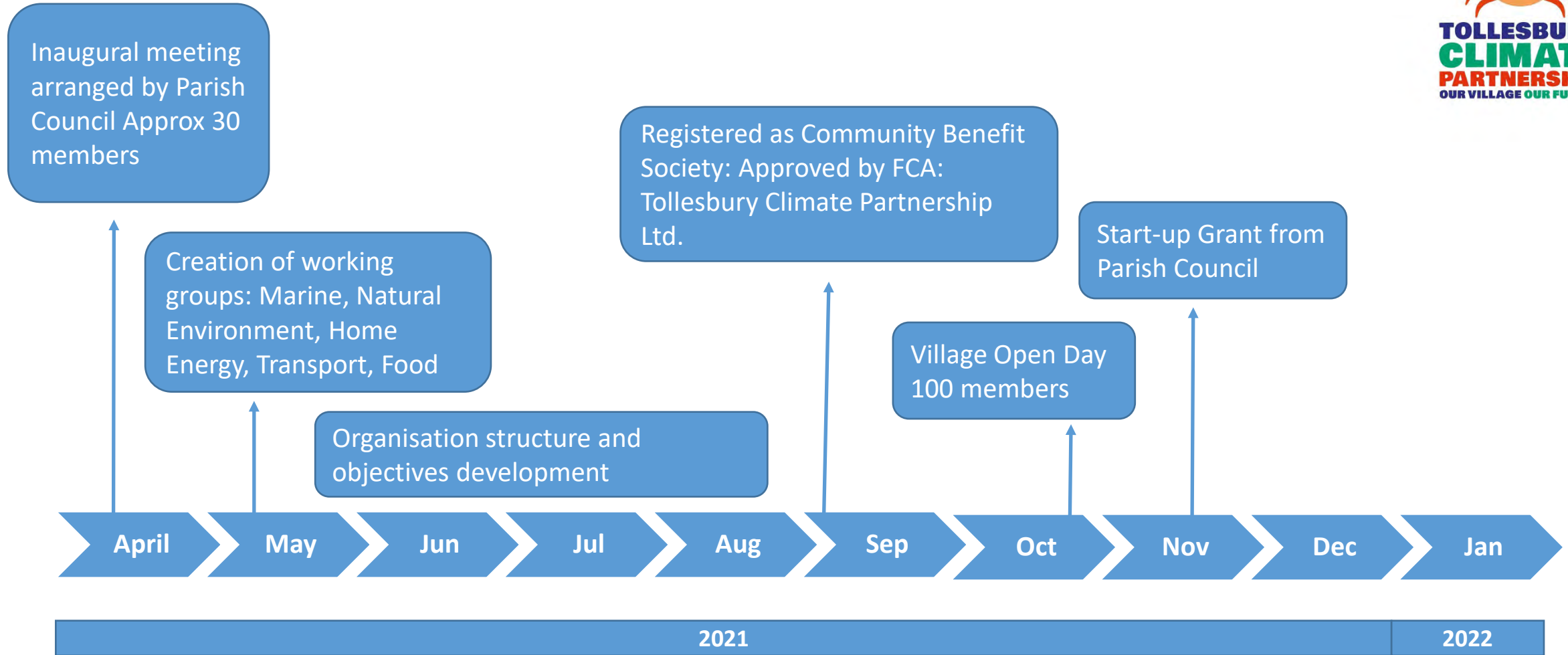




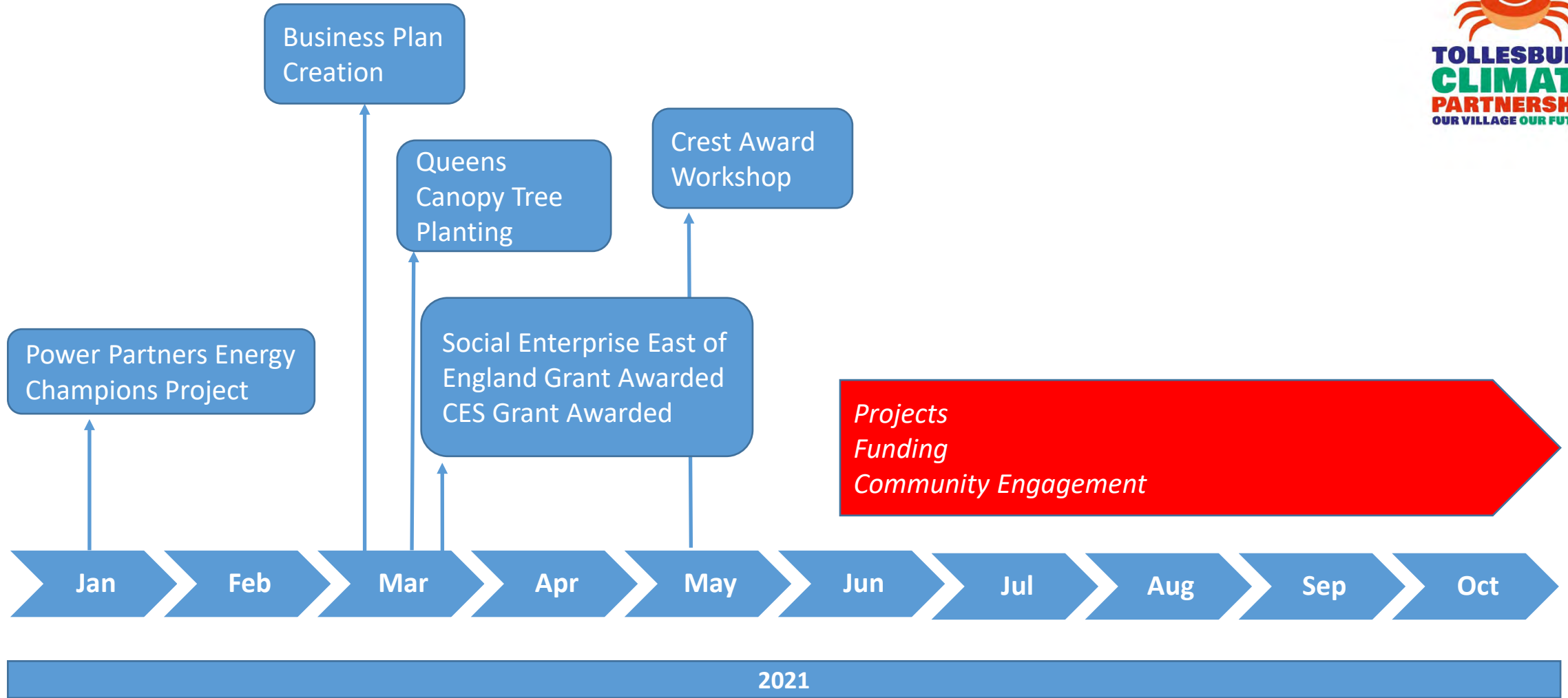
Land & Marine Community



Timeline 2021

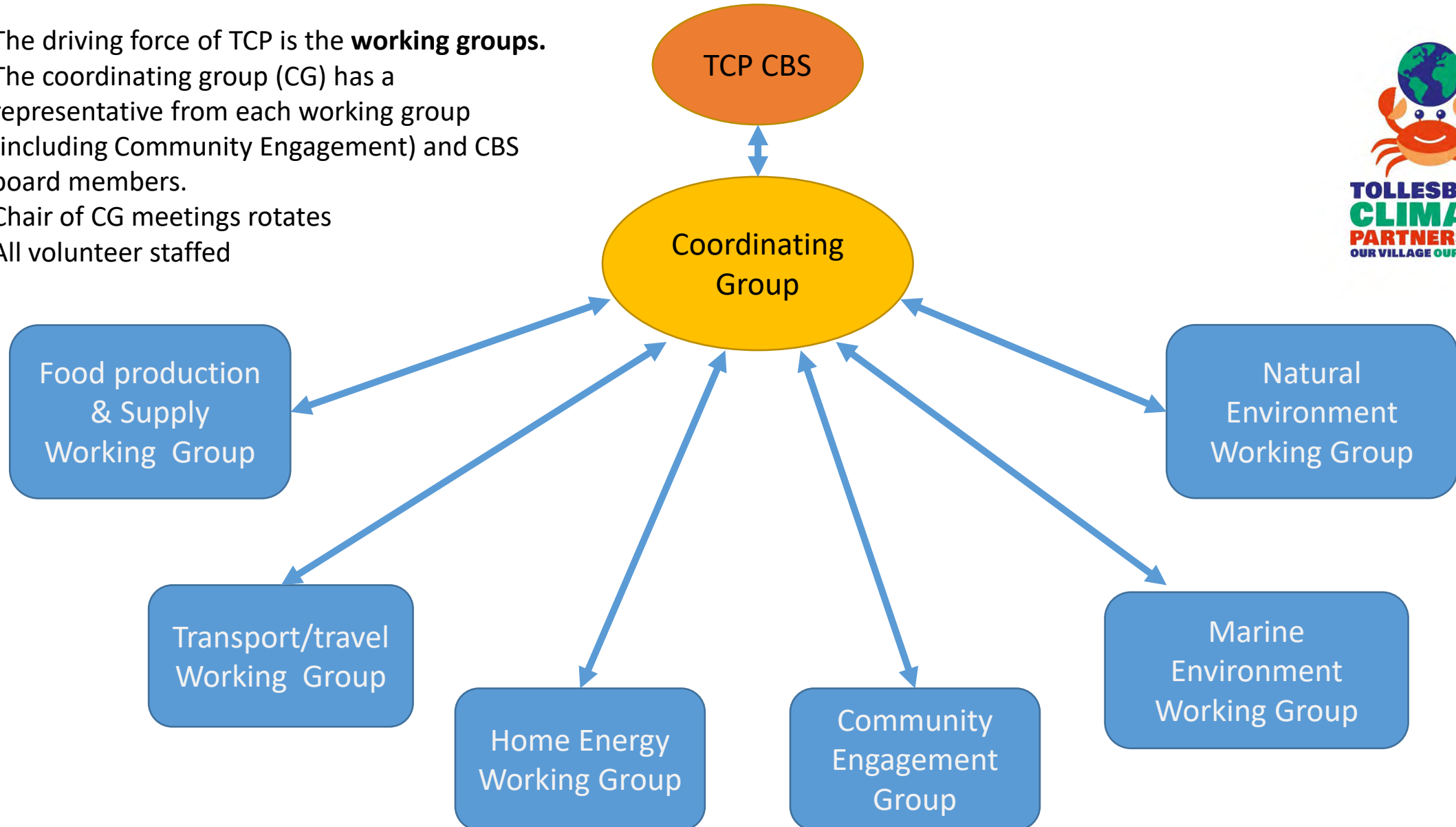
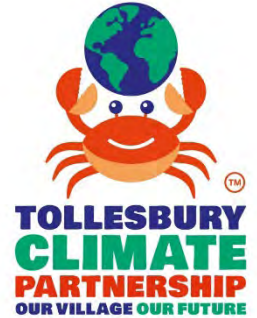


Timeline 2022



TCP Structure

The driving force of TCP is the **working groups**.
The coordinating group (CG) has a representative from each working group (including Community Engagement) and CBS board members.
Chair of CG meetings rotates
All volunteer staffed



TCP Working Groups 1



Community Engagement

- Inform and educate local community
- Encourage and build membership
- Publicity (events, press, social media etc)
- Influence local organizations

Home Energy

- Move to low carbon fuels (presently mostly oil)
- Improve home insulation
- Community energy schemes
- Energy usage advice

Natural Environment

- Tree planting(Queens Canopy)
- Flood prevention
- Wildlife friendly areas
- Water saving initiatives

Marine Environment

- Mitigation against rising sea levels
- Saltmarsh and seagrass restoration
- Sea water quality improvement
- Marine Stakeholder Group initiatives

TCP Working Groups 2

Transport

- Cycle routes
- Electric vehicles, charging points
- Improve bus services (community buses), car sharing

Food Production

- Use local suppliers more
- Encourage healthy eating
- Promote sustainable food



Village Open Day 10th October 2021

- General awareness and Fun Day
- Membership increased to 100+



JOIN OUR GROUP

RIISING SEA LEVELS

- Assessing impact of sea level rise
- Coordinating with relevant bodies
- Developing mitigation initiatives

NAVIGATION CHANNELS

- Assessing changes to depths in navigation channels
- Working closely with relevant organisations to make improvements

MARINE FLORA AND FAUNA

- Working with relevant organisations to help improve coastal plant and animal life (eg sea grass, oysters)

SEA WATER QUALITY

- Monitoring measurements made by various bodies
- Preparing initiatives to improve sea water quality



#tollesburyclimate | @tollesburyclimatepartnership



HELP PUT THE BRAKES ON CLIMATE CHANGE.

We want to -

- Plant more trees and hedges around the village
- Help people cope with storms and heat
- Take action to prevent flooding
- Create more wildlife friendly areas throughout the village
- Encourage people to use less water

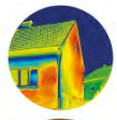
WHAT IDEAS DO YOU HAVE?



#tollesburyclimate | @tollesburyclimatepartnership



- Help householders access government grants (e.g. forthcoming Green Homes Grants)
- Use our thermal imaging camera to identify where your home is losing heat
- Provide case-studies of residents who have already installed low-carbon solutions
- Investigate and develop community energy schemes
- Work with any ideas you share with us!



#tollesburyclimate | @tollesburyclimatepartnership



WHAT CAN WE DO?

- Reduce our energy use
- Move away from oil-fired boilers
- Improve our home insulation (e.g. cavity wall insulation, double glazing)
- Improve our energy efficiency (e.g. LEDs and energy efficient appliances)
- Use low-carbon heating solutions (e.g. heat pumps and solar thermal)
- Develop Community Energy Systems



#tollesburyclimate | @tollesburyclimatepartnership



WE HAVE A FEW IDEAS:

- Encouraging walking & cycling – safer cycle routes, bike stands, bike repair workshops etc.
- Converting bikes to electric
- Using local buses – what would encourage us to use them more?
- Car sharing and lift-sharing with others in the village
- Cutting down on deliveries through the village - a central delivery hub, e-cargo bikes



WHAT IDEAS DO YOU HAVE?

#tollesburyclimate | @tollesburyclimatepartnership



OUR GROUP WILL EXPLORE LOTS OF IDEAS FOR REDUCING OUR CARBON FOOTPRINT THROUGH THE FOOD WE EAT

- Work with local suppliers to increase the availability of locally produced food
- Promote food that's produced sustainably and with a low carbon footprint
- Raise awareness of the environmental and health benefits of a balanced diet
- Support people and projects producing good quality and affordable food locally
- Encourage 'grow your own'



#tollesburyclimate | @tollesburyclimatepartnership



Energy Cafes & Community Advice Throughout 2022



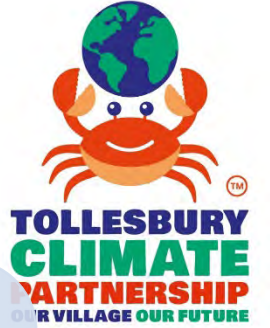
- Trained TCP volunteers provide energy advice
- Training provided by Centre for Sustainable Energy
- Advice on energy saving, energy bill reduction and access to grants

Tree Planting: 19 & 20 March 2022



- Approx 200 people attended
- 400 trees planted
- Trees donated by Woodland Trust
- Queens Canopy initiative

Seed Swap



- Seed Swap Hut in village centre
- Seed planting day at Wildest Rumpus on 14th May

Crest Award Initiative



EXPLORE THE SALTMARSH ACHIEVE A CREST AWARD

**10-3pm, Monday 11th April, Tollesbury Activity Centre,
Woodrolfe Road, Tollesbury, Maldon CM9 8SE**

Did you know that Seagrass and saltmarshes, like rainforests, absorb CO2 and can play an important part in reducing the impact of climate change? Join a fun study day on the marshes to explore how saltmarshes and their plants help protect our coastline from climate change impacts and improve biodiversity.

WHAT'S INVOLVED?

**THE EVENT IS FREE, A £5 FEE
FOR THE CREST AWARD IS
PAYABLE IN ADVANCE**

**DAY STARTS WITH A SHORT
FILM AND WORKSHOP ABOUT
TOPICS WE'LL BE RESEARCHING**

**INVESTIGATE BIODIVERSITY
ON THE MARSHES**

**DO A FUN QUIZ TO TEST
OUR KNOWLEDGE**

**WRITE UP YOUR PROJECT
ON THE DAY WITH SUPPORT
FROM LOCAL EXPERTS**

**.... GET A PRESTIGIOUS
BRONZE CREST AWARD
AND CERTIFICATE!**

The **CREST Awards** aim to inspire young people to think and behave like scientists. They are great to include in your college and university applications.

The day is organised by the **Tollesbury Climate Partnership** and led by an experienced CREST award teacher. If you're aged **11-14** and interested in participating, please contact Julie Heller, Community Engagement Coordinator, TCP engage@tollesburyclimate.org or 07946 616150.



- Monday 11 April workshop



TCP – Next Steps

Projects

- Working groups to start working on new projects
- Proposal to de-carbonise school

Funding

- Current funding from Parish Council and Social Enterprise East of England (SEEE)
- Specific projects will require new grants or local fundraising

Community Engagement

- Open days and community events being planned
- Crest Award
- Energy advice



Liaison With Tollesbury Parish Council



- ☐ TCP is independent from the Parish Council but expects support for its initiatives.
- ☐ Questions: What are the Council's intentions in the following areas?
 - Initiatives to promote cycling.
 - Planning applications and climate change considerations.
 - Neighbourhood Plan and climate change considerations.
 - Community Energy Schemes.
 - Community Buses.
 - Rising sea level protection/mitigation.

TOLLESBURY PARISH ANNUAL ASSEMBLY

8TH APRIL 2022

TOLLESBURY PARISH ANNUAL ASSEMBLY



Tollesbury Parish Council

Simon Plater - Chairman

Tom Lowther - Vice-Chairman

Mike Bell

Vikki Chambers

Roy Clare

Louise Goldie

Sarah Hawes

Jolene Rogers

Andrew St Joseph

County Councillor – Mark Durham

District Councillor – Maddie Thompson

District Councillor – Emma Stephens



TOLLESBURY PARISH ANNUAL ASSEMBLY



Agenda

- ❖ Apologies
- ❖ Minutes of the Last Assembly
- ❖ Mersea Harbour Protection Trust – Mark Dixon
- ❖ Tollesbury Climate Partnership – Ian Marwood
- ❖ Chairman's Report
- ❖ Neighbourhood Plan Update
- ❖ Youth Working Group
- ❖ Queen's Jubilee Celebrations
- ❖ Other Village Matters
 - ❖ Parking in the village
 - ❖ Location of Portaloos – Woodup Pool
 - ❖ Road Surfaces
 - ❖ Adult Gym – Recreation Ground
- ❖ Q & A Session



Chairman's Report

TOLLESBURY PARISH ANNUAL ASSEMBLY



In the last 12 months

- ❖ We sadly lost Cllr Roger Lankester and we miss his contributions.
- ❖ Cllr Sarah Legg resigned from the Parish council and Louise Goldie was co-opted as a Councillor.
- ❖ There are currently two vacant seats on the Parish Council.
- ❖ Following the easing of COVID restrictions, the Parish Council returned to face-to-face meetings last May which were held in The Centre. With effect from April 2022, Parish Council meetings have returned to the Pavilion.
- ❖ The Parish Council reverted to having two meetings per month. The second meeting of the month is mainly to deal with planning applications.



In the last 12 months

❖ Recreation Ground

Football at the Recreation Ground continues to grow. There are now four adult teams and four junior teams, and the number of pitches has been increased to accommodate their needs.

The Parish Council has supported the football teams by giving grants towards the purchase of new portable goalposts.

Following a survey of the trees at the Recreation Ground by an independent assessor, a number of trees were removed but we have plans to replace them,

In the last 12 months

❖ Woodup Pool

The new sluice gate was installed last year for the new season.

The Parish Council has been in communication with MDC who have advised that they no longer would pay for the water testing of Woodup Pool and these costs are to be covered by the Parish Council.

Donation boxes have been installed at Woodup Pool and donations have been gratefully received showing appreciation.

❖ Woodrolfe Hard

Due to the increased diversity of use of the Hard, new stone has been laid improving the area by making it larger for better access.



In the last 12 months

❖ Amenities

- ❖ Various works (hedge/tree cutting,) were carried out at the Allotments.
- ❖ Road scalplings laid in the car park of Woodrolfe Green

❖ Other Items

- ❖ Consulted on 62 Planning Applications (this included the resubmission of some planning applications – revised drawings etc).
- ❖ Website complies with Web Content Accessibility Guidelines (WCAG) 2.1 level A compliance and partially passes WCAG 2.1 level AA.
- ❖ Initiated and facilitated the Tollesbury Climate Partnership (Presentation from Ian Marwood) and the Youth Working Group to address young people's issues in the village



WE ARE MALDON DISTRICT

In the last 12 months

❖ Road Safety

The Parish Council is aware of the various concerns by residents regarding parking, traffic and speeding in the village.

In March, some members of the Parish Council met with District Councillor Stephens to discuss the various issues and it has been agreed to apply to the Local Highways Panels to try to address the issues.

The application is still being worked on and will be submitted to the Panel in due course.

It would be helpful for residents to report highways issues via the Essex County Council online reporting tool.



Finance

- ❖ Accounts for 2020/21 audited with no adverse comments.
- ❖ Accounts for 2021/22 are being finalised and will be inspected by the Internal Auditor before the Annual Governance Accounting Return is submitted to the External Auditor PKF Littlejohn.
- ❖ Precept – For 2022/23 the Precept was set at £92,599.50. When compared to the 2021/22 precept, this was an increase of £2,697.50. This resulted in an increase of £1.09 (1.19%) per household (based on a Band D property).



**The Parish Council wish to thank
everyone who has helped support
the Council**