



# Neighbourhood Plan

## Have Your Say!

The system for creating planning policy in England has changed recently - local people now have the ability to establish their own plans for their communities by writing a Neighbourhood Plan. We need your help to write the Neighbourhood Plan for Tollesbury.

The Parish Council is working with Maldon District Council and consultants appointed to help with the process. Over the coming weeks and months the team will be reviewing all the existing planning policy and local documents, gathering views on what should be in the plan and working to shape a draft strategy for Tollesbury which meets the aspirations and needs of local people.

The Neighbourhood Plan can include a wide range of topics, and deal with all sorts of issues and opportunities. However, there are some limits on what we can do and the plan must be 'in conformity' with the strategic policies of the Maldon Local Plan which is being drafted at the moment. This simply means that our local policies cannot contradict the main points in the Local Plan, but we can add more information about how we want to see those policies applied in Tollesbury.



**Get involved - this is your chance to shape the future of your village!**

[www.essexinfo.net/tollesbury-parish-council](http://www.essexinfo.net/tollesbury-parish-council)

## Your thoughts

We want to listen to what you think is important for this plan. What do you think is great about Tollesbury? What you want to protect or improve? What great ideas do you have for potential changes. What does Tollesbury really need?

This is an important chance for everyone to contribute their views and to help shape the future vision for the village. Everyone is welcome to offer ideas at this stage – we want to hear from groups, organisations, businesses and individuals.

Your ideas can cover a range of subjects such as housing, jobs, shopping, transport, community infrastructure, sport and leisure, river-related uses, education, landscape, conservation and more. We also want to hear what you think about the overall character of Tollesbury and what the vision for Tollesbury should be over the next 20 years.

## How to contribute

All comments are welcome at this stage – here's a few suggestions to help when you are putting your comments together:

- **Let us know who you are** – please provide details so we know who the comments are from. We will publish a list of the groups and individuals separately from the lists of comments.
- **Please make your comments clear** – if you note something as a comment, please be clear about whether you think this is an asset or a problem. Please also use clear place names and street names
- **Please try to keep each comment brief** – bullet points will help us much more than essays. We will collate comments on similar themes so please try to make sure that each one reads as a stand-alone note.
- **Draw as well as write** – feel free to send photos, sketches, diagrams or maps, particularly if your ideas are about specific places.
- **Please send your comments electronically if at all possible** – our team will be collating comments for a large display and report so electronic formats are appreciated. Please email them to [tollesburypc@btinternet.com](mailto:tollesburypc@btinternet.com).

Please send us your initial thoughts by the end of **June 2014**

You can also come along to the events that we are planning

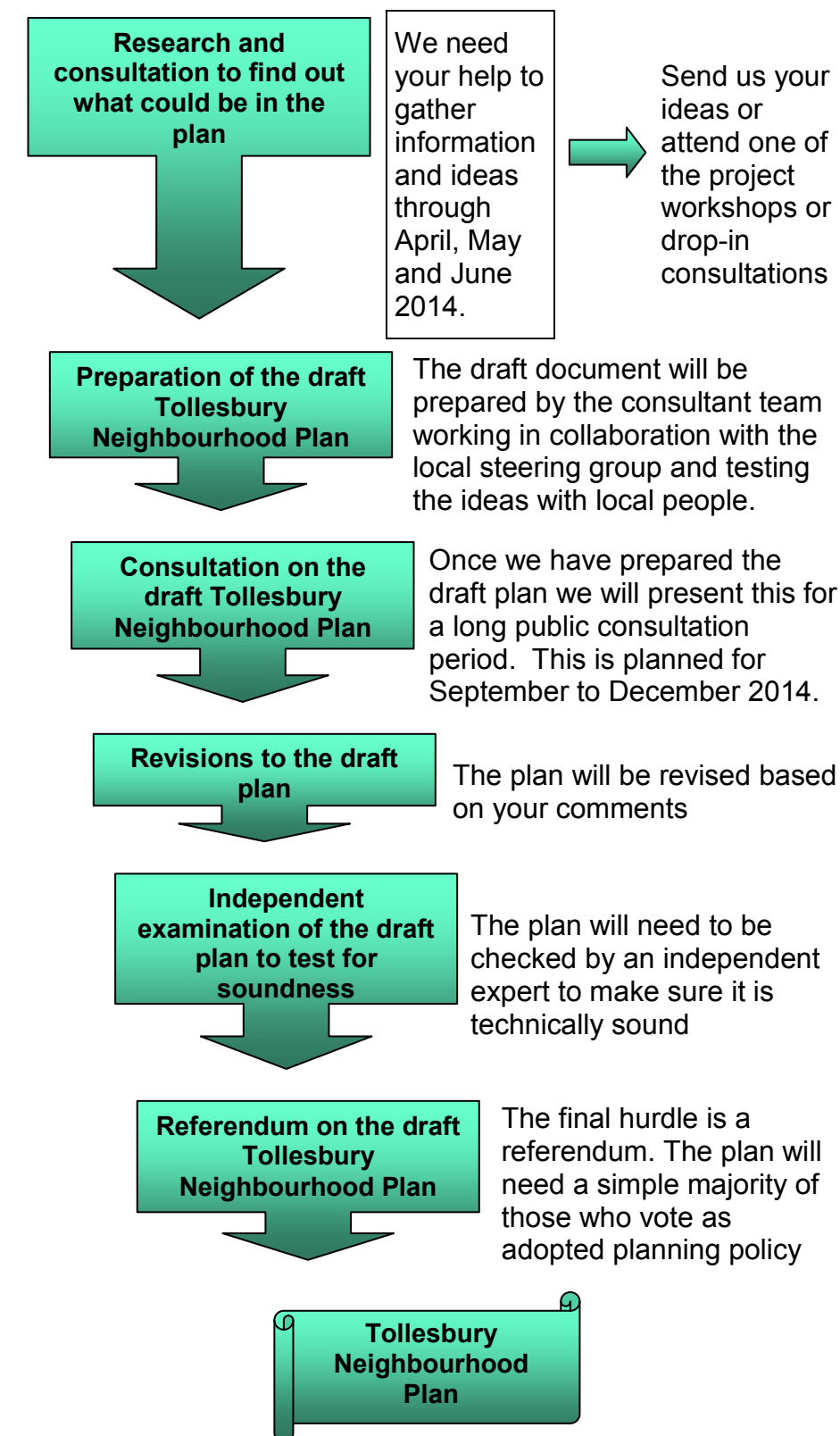
**Parish Annual Assembly**

**Wednesday 16<sup>th</sup> April 2014 in the Pavilion**

More events will be planned through the duration of the project.

## What will happen?

The process of preparing the Neighbourhood Plan will take time and has to follow a process set down in regulations. This diagram explains the process and when and how you can get involved:

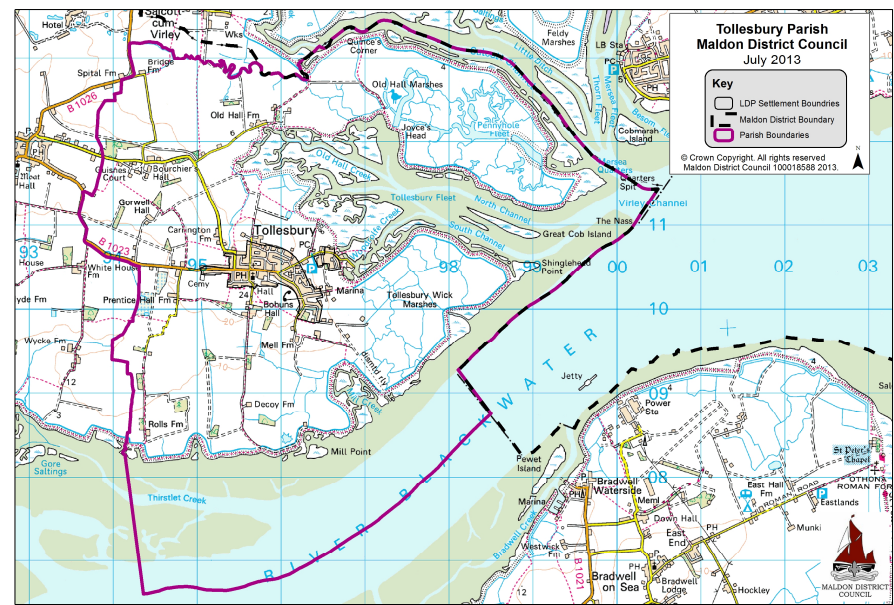


[www.facebook.com/pages/Tollesbury-Parish-Council](http://www.facebook.com/pages/Tollesbury-Parish-Council)

Tollesbury Neighbourhood Plan

# Plan area

The boundary for the Tollesbury Neighbourhood Plan has been agreed and is shown on this plan.



# Contact us

If you want to send us your ideas or have any questions about the project you can contact:

**Parish Clerk:** Michelle Curtis  
**01621 869 039**    [tollesburypc@btinternet.com](mailto:tollesburypc@btinternet.com)

For matters related to the Maldon District Local Development Plan contact:

**01621 876 202**    [policy@maldon.gov.uk](mailto:policy@maldon.gov.uk)



# Questions

## What is a Neighbourhood Plan, and why is it different?

A Neighbourhood Plan is prepared by neighbourhood forums or local town/ parish councils to establish general planning policies for the development and use of land in a particular neighbourhood. Consultation is a major part of the process of developing a Neighbourhood Plan and it must be approved in a local referendum before it is adopted as planning policy.



## What area will the Neighbourhood Plan for Tollesbury cover?

The area of the plan covers both the wards of Tollesbury and is exactly the same as the Tollesbury Parish boundary.



## How far can a Neighbourhood Plan go – can it be used to block the housing being proposed in the draft Local Development Plan?

Local people set the agenda for what goes into a neighbourhood plan. However, there are a number of conditions which control how far the policies can go. The plan must take account of the national planning policy and the Maldon District Local Development Plan – it cannot contradict or limit policies which are already set. However, it can provide more detailed guidance and it can suggest further growth if local people think this is a good idea. It also cannot be used to overturn an existing planning permission.



# Where can I find out more about the existing planning policy?



National Planning Policy Framework

<http://tinyurl.com/36myyak>



Neighbourhood Plans

<http://tinyurl.com/4ybu65l>



Maldon District planning policies and emerging Local Development Plan

<http://tinyurl.com/ojvhpry>



Planning Advisory Service Neighbourhood Plans FAQs

<http://tinyurl.com/7qv382>



Tollesbury Parish Council  
[www.essexinfo.net/tollesbury-parish-council](http://www.essexinfo.net/tollesbury-parish-council)