



TOLLESBURY
PARISH
COUNCIL

AGENDA – RECREATION GROUND COMMITTEE
11TH OCTOBER 2022

Tollesbury Parish Council

Notice is hereby given that a Meeting of the Recreation Ground Committee will be held on **Tuesday 11th October 2022** at **The Pavilion, Tollesbury Recreation Ground, Elysian Gardens**, commencing at **7.00 pm**, to which members of the Council are summoned for the transaction of the under-mentioned business.

M. Curtis

Michelle Curtis – Clerk to the Council

4th October 2022

Committee Members

Councillors: Cllr V Chambers, Cllr A Ferneyhough, Cllr T Lowther,
Cllr St Joseph

THE PRESS AND PUBLIC ARE CORDIALLY INVITED TO ATTEND

Photographing, recording, broadcasting or transmitting the proceedings of a meeting by any means is permitted however the privacy of (i) persons who object to the same and (ii) children and vulnerable adults must be respected by anonymising the identities of such.

AGENDA

- 1. Chairman**
To appoint Chairman for the Recreation Ground Committee.
- 2. Vice-Chairman**
To appoint Vice-Chairman for the Recreation Ground Committee.
- 3. Apologies for Absence**
To receive apologies for absence.
- 4. Declaration of Interest**
Members are reminded that they are required to declare any Disclosable Pecuniary Interests, Other Pecuniary Interests and Non-Pecuniary Interests which they know they might have in items of business on the agenda. They are reminded that they will need to repeat their declarations at the appropriate point in the meeting and leave the room if required under the Code of Conduct. Unforeseen interests must be declared similarly at the appropriate time.

5. Public Forum

Members of the public will be given an opportunity to put forward their question(s) or statement to the Council. The Chairman will, at his discretion, then decide if he is able to answer the question(s) or proposes to put the item on the agenda for the next meeting.

6. Minutes

To confirm Minutes of the Meeting held on 26th April 2021

7. Play Inspection Report

To receive the report from the Annual Independent Play Area inspection.

8. Maintenance

To consider any maintenance works required for the Recreation Grounds

9. Other Matters

To consider any other matters relating to the Recreation Ground.

10. Next Meeting

The next meeting of the Recreation Ground Committee is to be held on:
Tuesday 8th November 2022

Clerk: Michelle Curtis

Address: Tollesbury PC, PO Box 13205, Maldon CM9 9FU

Telephone: 01621 869039. **Email:** tollesburypc@btinternet.com



the play inspection company

Annual Inspection

Maldon District Council

Tollesbury - Victorian Recreation Ground

Elysian Gardens, Tollesbury, Maldon, Essex,



API Associate



Unit 5, Glenmore Business Park, Blackhill Road, Poole, Dorset, BH16 6NL
t- 01202 590675 e- info@playinspections.co.uk

www.playinspections.co.uk

Inspection Scope for RPII Inspection Methodology

This document outlines the RPII scope for inspections undertaken by the Inspectors listed as Annual Inspectors on the RPII Register of Inspectors when undertaking Indoor Annual, Outdoor Annual, Outdoor Operational and Outdoor Routine inspections.

Inspections are undertaken with reference to the standards listed in this preamble only; where no date for the standard is given it will be the standard that is current at the time of inspection except where overlap periods are granted by the standards committee when standards are updated. The information contained in reports is provided to assist the owner/operator in fulfilling their responsibilities as detailed in the relevant standard. Other standards referenced within the listed standards do not form part of the inspection, unless they are also explicitly listed here.

The following standards are relevant to all installations of equipment that are publicly accessible to users; this includes public parks, pay and play parks, schools, nurseries, public houses, holiday parks, indoor play centres, farm parks etc. All equipment used or employed in publicly accessible areas should meet with the requirements of the relevant standards (listed below):

BS EN 1176 Parts 1, 2, 3, 4, 5, 6, 10 & 11 Playground equipment intended for permanent installation outdoors & indoors.

BS EN 1176 Part 7 - 'Guidance on Installation, Inspection, Maintenance and Operation' (this document gives guidance to the owners/operators of the facility on the installation, inspection, maintenance and operation of playground equipment, excluding ancillary items).

In the United Kingdom the National Foreword forms an important part to the understanding and implementation of the recommendations set out in this document. It clarifies the application of the document within the UK as best practice guidance, as the document has been used since its initial publication. Therefore, in the UK this standard (BS EN 1176 – Part 7) contains no requirements and needs to be read and implemented as guidance, with the use of the term 'shall' therefore becoming a recommendation, as in the term 'should'.

Domestic play equipment falls outside of the scope of BS EN 1176 and has its own standards (BS EN 71 series – Safety of Toys). Where domestic equipment can be identified this will be acknowledged in the report but any comments concerning compliance will follow the requirements and recommendations of BS EN 1176.

When water play items, including spray parks, are inspected any comments concerning compliance within the inspection will refer to BS EN 1176. We have not assessed these against the requirements of BS EN 17232 (Water play equipment and features).

Other equipment that is not clearly identified as unsupervised or domestic (natural play, self-build equipment etc.) will be assessed for compliance with the relevant standard listed below:

BS EN 15312 Free access multi-sports equipment

BS EN 14974 Skateparks

BS EN 16630 Permanently installed outdoor fitness equipment

BS EN 16899 Parkour equipment (plus RPII/API guidance notes)

Annual and Post Installation inspections will take into consideration compliance with these current standards, and defects related to wear and vandalism. Items not listed in the report have not been included in the inspection. The inspection will cover the playground equipment and the active area (that area which is obviously part of the playground), nominally up to three metres around, the fence line if closer, or other areas as agreed.

Operational inspections only take into consideration defects related to cleanliness, equipment ground clearances, ground surface finishes, exposed foundations, sharp edges, missing parts, excessive wear (of moving parts) structural integrity, wear and vandalism.

Routine visual inspections relate only to the most obvious defects such as broken or missing parts, litter, vandalism and issues created by severe weather conditions (the intention is to identify hazards created by storm damage).

All inspections are non-dismantling, non-destructive and do not include any structural, toxicology or impact assessments defined in the standard; however, the inspector will undertake a manual test for stability and if equipment fails under manual load, or any other hazard is identified as an unacceptable risk, the owner/operator will be notified as soon as practicably possible.

The inspector will access all reasonably accessible equipment and will assess all reasonably accessible parts above the standing surface. Where it is not possible to access parts of the equipment without employing an alternative means of access the report will record the action required by the owner/operator to ensure the continued safe use of the equipment.

Ancillary equipment will be assessed using the inspector's knowledge and experience of the standards named in this document. (Note: Ancillary items are not included in the specific equipment-type parts of the EN 1176 series; hence they are not assessed for compliance with EN 1176 series and are subject to a general safety assessment).

The owner/operator is responsible for the overall safety of the equipment and area.

The inspector will not undertake any of the following works unless specifically agreed in writing at the time of order:

Checking the depth and underlying structural integrity of any surface areas and/or carrying out any testing of the impact attenuating properties of any surfaces; the identification of any corrosion, rot or other deterioration in any apparatus or equipment other than by an external inspection; the inspection of any equipment (or part thereof) that is beneath the playing surface (loose-fill materials may be moved to expose foundations); tightening any bolts, hinges or other fixing devices on any apparatus or equipment; assessing or inspecting any electrical installations contained on any site and/or apparatus and/or equipment; assessing or inspecting any water supplies and/or water features and/or any associated computerised systems (including carrying out any programming); where planting or trees are mentioned in the report no assessments of toxicity, suitability or condition are undertaken – the owner/operator should have suitable inspections provided by a competent person.

The owner/operator should have a 'design risk assessment' provided by the manufacturer/designer of the area for the equipment and location in which the facility is installed.

The operator is responsible for managing risks of their provision and is required by law to carry out a 'suitable and sufficient assessment' of the risks associated with a site or activity. This inspection shall be considered as contributing to the operator's discharge of this responsibility.

The details contained within the report are a snapshot of the condition at the time of inspection only and subsequent events may affect the condition of the facility. Suggested remedial actions are based on the knowledge and experience of the inspector and/or that of the inspection company. The owner/operator should always seek the advice of the manufacturer or a competent person when undertaking repairs and/or modifications to equipment.

A full copy of the Play Inspection Company Ltd. Terms & Conditions is available on our website (www.playinspections.co.uk)

The operator is responsible for following the guidance of the relevant standards. The standards give guidance on the installation, inspection, maintenance and operation of the various types of facilities. The inspection guidance is listed in Table 1, with an indication of which parts will be included in an RPII Annual or Post-Installation Inspection. The relevant standards also contain additional parts which the operator should follow.

Inspection recommendations of relevant standards Refer to relevant standards for full text	Annual Main	RPII Annual/ Post Installation Inspection
6.1 d) Overall levels of safety of equipment (see note 1)	✓	✓ [1]
6.1 d) Overall levels of safety of foundations (see note 1)	✓	✓ [1]
6.1 d) Overall levels of safety of playing surfaces (see note 2)	✓	✓ [2]
6.1 d) Compliance with the relevant parts of the standard and or risk assessment (see note 3)	✓	✓ [3]
6.1 d) Effects of weather	✓	✓
6.1 d) Presence of rot, decay or corrosion (see note 1)	✓	✓ [1]
6.1 d) Assessment of repairs made or added or replaced components (see note 4)	✓	✓ [4]
6.1 d) Excavation or dismantling/additional measures	✓	✗
6.2.1 Assessment of glass reinforced plastics (see note 5)	✓	✓ [5]
6.2.1 Inspection of one post equipment (see note 1)	✓	✓ [1]
6.2.4 Undertaking the Operators inspection protocol	✓	✗

NB: The clause numbers in table 1 are taken from BS EN 1176 - Part 7:2020. The content is equally applicable to all other relevant standards listed herein. Playgrounds contain a range of equipment from different manufacturers and installed over a number of years; operators should implement any guidance provided by the manufacturer. Item specific detail is not readily available to RPII Playground Inspectors, whose report contributes to the operator's overall Annual Main Inspection as detailed in the relevant standards.

[1] A manual test only is undertaken for stability. Wear and instability are only detectable where readily apparent without dismantling or destruction and without the use of tools, excavation or specialist equipment. Rot and corrosion are tested or with a hammer and/or steel rod. Decay in timber may exist which can only be found with specialist equipment.

[2] Only the visible condition and dimensional compliance of surface extent is considered. Neither testing of impact attenuating properties nor measurement of the thickness of bound surfaces are undertaken on RPII annual inspections.

[3] The inspection assesses compliance where this can be tested on site using manual methods without dismantling, destruction and without the use of tools or specialist equipment.

[4] The operator should use manufacturer's recommended parts, or equivalent. We are unable to verify if such parts have been used, and any subsequent change in quality or performance.

[5] Visible glass fibres will be noted in reports. The operator is responsible for repairs or replacement.

Risk Assessment Matrix

			Scores in the report are multiplication factors of Likelihood x Severity					
			Severity>>					
Likelihood	Very High probability, if the situation is not addressed an accident is almost certain.	5	Very High	VL (5)	L (10)	M (15)	H (20)	VH (25)
	High probability an accident is probable without any added factor.	4	High	VL (4)	L (8)	M (12)	H (16)	H (20)
	Moderate probability an incident is foreseeable.	3	Moderate	VL (3)	L (6)	L (9)	M (12)	M (15)
	Some probability, requires a combination of factors to take place.	2	Low	VL (2)	VL (4)	L (6)	L (8)	L (10)
	No significant probability; lightning strike, freak accident.	1	Very Low	VL (1)	VL (2)	VL (3)	VL (4)	VL (5)
				Very Low	Low	Moderate	High	Very High
				1	2	3	4	5
				No injury likely e.g. damaged or soiled clothing, minor bruising, grazes	Minor injury, laceration or bruising requiring first aid only	Injury requiring medical intervention e.g. cuts requiring stitches	Serious injury including concussions or fracture of long bones	Severe injury involving a potential life changing injury or fatality
				Severity>>				
Note 1: The total risk scores included within our reports are a multiplication factor of the calculated Likelihood and Severity of each finding. Both Likelihood and Severity are given a number between 1 - 5 as shown on the matrix above and these two numbers are then multiplied together to give the total risk score that is shown against defects on the report. Total risk scores can be divided in both directions, i.e. a total risk score of 12 could be a Likelihood (3) x Severity (4) or Likelihood (4) x Severity (3).								
Note 2: When we inspect we only see a snapshot of the current condition of the equipment. It is the operators responsibility to ensure that there is a continuing level of maintenance to keep the equipment in good working order and the site fit for use.								

Equipment has been assessed to the following standards where relevant:

BS EN 1176 Parts 1-11 (Playground equipment and surfacing)
BS EN 14974 (Facilities for users of roller sports equipment)
BS EN 15312 (Free access multi-sports equipment)
BS EN 16899 (Parkour Equipment)
BS EN 16630 (Outdoor Fitness Equipment).

Tollesbury - Victorian Recreation Ground

Inspection Ref: 1680397

Site Ref: 15139

Inspected: 8-June-2022 - 07:39 by Alan Lingley RPII Annual Inspector

Risk Assessment: 10 Low Risk

**Location:**

The site is located in an area of public open space and is overlooked by a number of properties in the local community.

Disabled Access:

Generally accessible; an area accessible to most.

8 - Low Risk

Item: Gate - Self Closing
Manufacturer: Unknown
Surface Type: N/A
Item Quantity: 3
Equipment Compliance: N/A
Surface Area Compliance: N/A

Total Findings: 3



Finding 1

The surface has eroded in some areas - Reinstate the surface

Finding 2

There are openings that are less than 12mm that could trap or crush fingers - Where possible a 12mm gap should be maintained on both sides or between the gate leaves

Finding 3

The gate is not operating correctly - Take effective action to ensure the gate closes between 4 and 8 seconds

4 - Very Low Risk

Item: Gate - Maintenance
Manufacturer: Unknown
Surface Type: N/A
Item Quantity: 1
Equipment Compliance: N/A
Surface Area Compliance: N/A

Total Findings: 1



Finding 1

This item is satisfactory - no work required -



i 4 - Very Low Risk

Item: Fence - Bow Top
Manufacturer: Unknown
Surface Type: N/A
Item Quantity: 1
Equipment Compliance: N/A
Surface Area Compliance: N/A



Total Findings: 1

Finding 1

This item is satisfactory - no work required -

i 2 - Very Low Risk

Item: Sign
Manufacturer: Owner/Operator
Surface Type: N/A
Item Quantity: 1
Equipment Compliance: N/A
Surface Area Compliance: N/A



Total Findings: 1

Finding 1

This item is satisfactory - no work required -



4 - Very Low Risk

Item: Bench
Manufacturer: Owner/Operator
Surface Type: Bonded Rubber Mulch
Item Quantity: 2
Equipment Compliance: N/A
Surface Area Compliance: N/A



Total Findings: 1

Finding 1

This item is satisfactory - no work required -

6 - Low Risk

Item: Picnic Table
Manufacturer: Owner/Operator
Surface Type: Bonded Rubber Mulch
Item Quantity: 3
Equipment Compliance: N/A
Surface Area Compliance: N/A



Total Findings: 1

Finding 1

There is weed / vegetation growth on, between, or around the edges of the surfacing - Remove weed / vegetation growth

i 6 - Low Risk

Item: Litter Bin
Manufacturer: Owner/Operator
Surface Type: N/A
Item Quantity: 1
Equipment Compliance: N/A
Surface Area Compliance: N/A

Total Findings: 1



Finding 1

The lid or door of the litter bin is not secured - Ensure the lid or door is kept locked

i 6 - Low Risk

Item: Site General
Manufacturer: Unknown
Surface Type: N/A
Item Quantity: 1
Equipment Compliance: N/A
Surface Area Compliance: N/A

Total Findings: 1



Finding 1

There is weed / vegetation growth on, between, or around the edges of the surfacing - Remove weed / vegetation growth

i 10 - Low Risk

Item: Multi Play (Junior)
Manufacturer: Not Identified
Surface Type: Bonded Rubber Mulch
Item Quantity: 1
Equipment Compliance: No
Surface Area Compliance: Yes

Total Findings: 10



Finding 1

There is an opening in the barriers exceeding the width allowed (500mm) in BS EN 1176, this is a low risk failure and no remedial action is required - Monitor - No remedial work recommended

Finding 3

The paintwork on this item has been damaged or worn exposing the metal underneath which is rusting - Treat any rusting components and repaint

Finding 5

There is/are several inserts missing - Replace missing inserts

Finding 7

The ropes/nets are worn/damaged in places - Monitor for any further deterioration and repair or replace as required

Finding 9

There is or are fixings missing on the item - Replace all missing fixings

Finding 2

The unit is easily accessible and should have the appropriate barriers installed to meet the requirements of BS EN 1176 Part 1 as the height of the unit exceeds 600mm - Monitor - No remedial work recommended

Finding 4

There is algae or moss on the surface of the equipment - Clean and treat appropriately

Finding 6

The weld(s) on this item have failed - Repair item

Finding 8

The item fails to meet the requirements of BS EN 1176 Part 1 4.2.7.2 head and neck entrapment in the barriers and/or steps - Monitor - No remedial work recommended

Finding 10

The tube(s) on this item have corroded from the inside and split the steel - Replace all affected parts

i 8 - Low Risk

Item: Climbing Frame
Manufacturer: Wicksteed Playgrounds
Surface Type: Grass Matrix Tiles
Item Quantity: 1
Equipment Compliance: No
Surface Area Compliance: Yes

Total Findings: 8



Finding 1

The timber has a number of splits/shakes or air cracks and this may affect the stability or allow water ingress which will accelerate the rotting process - Monitor to ensure the splits do not cross through fixing points of the structure and/or cause any instability

Finding 3

There is algae or moss on the surface of the equipment - Clean and treat appropriately

Finding 5

There are falls in excess of 600mm between adjacent components on the structure, in contravention of the recommendations set out in BS EN 1176 Part 1; 4.2.8.4 - Monitor - No remedial work recommended

Finding 7

There are gaps opening between the grass mat tiles - Provide additional ties or secure / reinstate surface

Finding 2

The item fails to meet the requirements of BS EN 1176 Part 1 4.2.7.2 head and neck entrapment in the barriers and/or steps - Monitor - No remedial work recommended

Finding 4

There is some damage to the item - Monitor for any further deterioration and repair as required

Finding 6

There is some strimmer / machinery damage apparent on the posts, this can penetrate the preservative applied to the timber and accelerate the rotting process - Monitor for any deterioration (rot) and replace as required

Finding 8

The rungs rotate - Secure

i 6 - Low Risk

Item: Free Standing Slide
Manufacturer: Wicksteed Playgrounds
Surface Type: Grass Matrix Tiles
Item Quantity: 1
Equipment Compliance: No
Surface Area Compliance: No

Total Findings: 8



Finding 1

The timber edging forms a hard object within the impact area of the equipment in contravention of the requirements of BS EN 1176 Part 1 - Monitor - No remedial work recommended

Finding 2

There are a number of dents in the slide surface - Monitor for any further deterioration and repair as required

Finding 3

There is/are finger entrapment/s in the slide starting section and the item fails to meet the requirements of BS EN 1176 Part 1 4.2.7.6 Entrapment of fingers - Monitor - No remedial work recommended

Finding 4

The item fails to meet the requirements of BS EN 1176 Part 1 4.2.7.2 head and neck entrapment in the barriers and/or steps - Monitor - No remedial work recommended

Finding 5

There is some strimmer / machinery damage apparent on the posts, this can penetrate the preservative applied to the timber and accelerate the rotting process - Monitor for any deterioration (rot) and replace as required

Finding 6

The paintwork on this item has been damaged or worn exposing the metal underneath which is rusting - Treat any rusting components and repaint

Finding 7

There is an opening in the barriers exceeding the width allowed (500mm) in BS EN 1176, and no guardrail has been provided; this is a low risk failure and no remedial action is required - Monitor - No remedial work recommended

Finding 8

The bars rotate - Secure

i 6 - Low Risk

Item: Roundabout
Manufacturer: Hunts
Surface Type: Wet Pour
Item Quantity: 1
Equipment Compliance: No
Surface Area Compliance: Yes

Total Findings: 2



Finding 1

There is/are finger entrapment/s in the seats and the item fails to meet the requirements of BS EN 1176 Part 1 4.2.7.6
Entrapment of fingers - Monitor - No remedial work recommended

Finding 2

The underside of the rotating platform shall be smooth for the first 500mm towards the axis to comply with the requirements of BS EN 1176 Part 5 - Monitor - No remedial work recommended

i 6 - Low Risk

Item: Climbing Frame
Manufacturer: Wicksteed Playgrounds
Surface Type: Bonded Rubber Mulch
Item Quantity: 1
Equipment Compliance: Yes
Surface Area Compliance: Yes

Total Findings: 3



Finding 1

The paint is flaking off the metalwork - Rub down and re-paint

Finding 2

The paintwork on this item has been damaged or worn exposing the metal underneath which is rusting - Treat any rusting components and repaint

Finding 3

There is some damage to the item - Monitor for any further deterioration and repair as required

i 6 - Low Risk

Item: Spring Cow
Manufacturer: Not Identified
Surface Type: Bonded Rubber Mulch
Item Quantity: 1
Equipment Compliance: Yes
Surface Area Compliance: Yes

Total Findings: 2



Finding 1

The paintwork on this item has been damaged or worn exposing the metal underneath which is rusting - Treat any rusting components and repaint

Finding 2

There is algae or moss on the surface of the equipment - Clean and treat appropriately

i 6 - Low Risk

Item: Spring Bird
Manufacturer: Not Identified
Surface Type: Bonded Rubber Mulch
Item Quantity: 1
Equipment Compliance: No
Surface Area Compliance: Yes

Total Findings: 3



Finding 1

The end caps are missing on the Handgrips/Footrests - Replace missing end caps

Finding 2

The end of handgrips and/or footrests have a cross section of less than 15cm² and fail to meet the requirements of BS EN 1176 Part 6 - Monitor - No remedial work recommended

Finding 3

There is algae or moss on the surface of the equipment - Clean and treat appropriately

i 10 - Low Risk

Item: 1 Bay 2 Seat (Flat)
Manufacturer: Wicksteed Playgrounds
Surface Type: Wet Pour
Item Quantity: 1
Equipment Compliance: No
Surface Area Compliance: Yes

Total Findings: 7



Finding 1

There is moderate damage to the surface - Repair the damaged areas of surfacing

Finding 3

There is some notable evidence of chain wear - Monitor for any further deterioration and replace when 40% worn

Finding 5

The bushes are worn or missing - Replace worn or missing bushes

Finding 7

The seats are too close to each other as defined in BS EN 1176 Part 2; this is a low risk failure and no remedial action is required - Monitor - No remedial work recommended

Finding 2

The chain openings are in excess of the 8.6mm as recommended by BS EN 1176 - Monitor - No remedial work recommended

Finding 4

The paint is flaking off the metalwork - Rub down and re-paint

Finding 6

The seats are too close to the frame as defined in BS EN 1176 Part 2; this is a low risk failure and no remedial action is required - Monitor - No remedial work recommended

i 6 - Low Risk

Item: 1 Bay 2 Seat (Cradle)
Manufacturer: Not Identified
Surface Type: Wet Pour
Item Quantity: 1
Equipment Compliance: No
Surface Area Compliance: Yes

Total Findings: 2



Finding 1

The chain openings are in excess of the 8.6mm as recommended by BS EN 1176 - Monitor - No remedial work recommended

Finding 2

There is some notable evidence of chain wear - Monitor for any further deterioration and replace when 40% worn

i 6 - Low Risk

Item: Grind Box
Manufacturer: Not Identified
Surface Type: Concrete
Item Quantity: 1
Equipment Compliance: Yes
Surface Area Compliance: Yes

Total Findings: 1



Finding 1

The paintwork on this item has been damaged or worn exposing the metal underneath which is rusting - Treat any rusting components and repaint

9 - Low Risk

Item: Quarter Pipe
Manufacturer: Not Identified
Surface Type: Concrete
Item Quantity: 1
Equipment Compliance: No
Surface Area Compliance: Yes

Total Findings: 3



Finding 1

The paintwork on this item has been damaged or worn exposing the metal underneath which is rusting - Treat any rusting components and repaint

Finding 3

Parts of the steel on this item have corroded excessively and the metal has perforated in places - Ensure all affected areas are treated and repaired

Finding 2

The height of the barrier is less than 1200mm and fails the requirements of BS EN 14974 - Monitor - No remedial work recommended

6 - Low Risk

Item: Half Pipe
Manufacturer: Not Identified
Surface Type: Concrete
Item Quantity: 1
Equipment Compliance: No
Surface Area Compliance: Yes

Total Findings: 2



Finding 1

The paintwork on this item has been damaged or worn exposing the metal underneath which is rusting - Treat any rusting components and repaint

Finding 2

The height of the barrier is less than 1200mm and fails the requirements of BS EN 14974 - Monitor - No remedial work recommended

8 - Low Risk

Item: Shelter
Manufacturer: Not Identified
Surface Type: Grass
Item Quantity: 1
Equipment Compliance: N/A
Surface Area Compliance: N/A

Total Findings: 4



Finding 1

The surface has eroded in some areas - Reinstate the surface

Finding 3

There is excessive movement within the structure - Monitor for any further deterioration and repair as required

Finding 2

There is offensive graffiti present - Remove as soon as practicable

Finding 4

There is weed / vegetation growth on, between, or around the edges of the surfacing - Remove weed / vegetation growth

8 - Low Risk

Item: Multi Play (Toddler)
Manufacturer: Not Identified
Surface Type: Bonded Rubber Mulch
Item Quantity: 1
Equipment Compliance: Yes
Surface Area Compliance: Yes

Total Findings: 2



Finding 1

There is or are fixings missing on the item - Replace all missing fixings

Finding 2

There is some graffiti present - Remove the graffiti

i 4 - Very Low Risk

Item: Free Standing Slide
Manufacturer: Not Identified
Surface Type: Bonded Rubber Mulch
Item Quantity: 1
Equipment Compliance: Yes
Surface Area Compliance: Yes

Total Findings: 1



Finding 1

This item is satisfactory - no work required -

i 4 - Very Low Risk

Item: See Saw
Manufacturer: Quali-Cite
Surface Type: Mixed Surface
Item Quantity: 1
Equipment Compliance: Yes
Surface Area Compliance: Yes

Total Findings: 1



Finding 1

This item is satisfactory - no work required -

4 - Very Low Risk

Item: Wobble Board
Manufacturer: Not Identified
Surface Type: Mixed Surface
Item Quantity: 1
Equipment Compliance: Yes
Surface Area Compliance: Yes

Total Findings: 1



Finding 1

This item is satisfactory - no work required -

8 - Low Risk

Item: Cable Runway
Manufacturer: Not Identified
Surface Type: Wet Pour
Item Quantity: 1
Equipment Compliance: No
Surface Area Compliance: Yes

Total Findings: 8



Finding 1

There is some notable evidence of chain wear - Monitor for any further deterioration and replace when 40% worn

Finding 3

The nylon inserts are worn or missing at the point the cable enters the traveller - Replace worn or missing inserts as required

Finding 5

The height of the seat is less than 350mm when loaded and does not meet the requirements of BS EN 1176 Part 4 - Ensure the seat is a minimum of 350mm above ground level when loaded with 69.5kg

Finding 7

The surface has eroded in some areas - Reinstate the surface

Finding 2

The seat suspension cover has been damaged - Monitor for any further deterioration and replace as required

Finding 4

The seat connection cannot be inspected without dismantling the seat - Dismantle the seat to inspect the seat connection for wear

Finding 6

There is the potential for users to pass through the freespace of the cableway when entering or exiting the play area - Monitor use

Finding 8

There is moderate damage to the surface - Repair the damaged areas of surfacing

Findings information

6 - Low Risk (Finding 1)

Item: Gates - Gate - Self Closing
Manufacturer: Unknown

Risk Level: L - Low Risk
Surface: N/A



Finding: The surface has eroded in some areas

Action: Reinststate the surface

8 - Low Risk (Finding 2)

Item: Gates - Gate - Self Closing
Manufacturer: Unknown

Risk Level: L - Low Risk
Surface: N/A



Finding: There are openings that are less than 12mm that could trap or crush fingers

Action: Where possible a 12mm gap should be maintained on both sides or between the gate leafs

5 - Very Low Risk (Finding 3)

Item: Gates - Gate - Self Closing
Manufacturer: Unknown

Risk Level: V - Very Low Risk
Surface: N/A



Finding: The gate is not operating correctly

Action: Take effective action to ensure the gate closes between 4 and 8 seconds

i 6 - Low Risk (Finding 1)

Item: Ancillary Items - Picnic Table
Manufacturer: Owner/Operator

Risk Level: L - Low Risk
Surface: Bonded Rubber Mulch



Finding: There is weed / vegetation growth on, between, or around the edges of the surfacing
Action: Remove weed / vegetation growth

i 6 - Low Risk (Finding 1)

Item: Ancillary Items - Litter Bin
Manufacturer: Owner/Operator

Risk Level: L - Low Risk
Surface: N/A



Finding: The lid or door of the litter bin is not secured
Action: Ensure the lid or door is kept locked

i 6 - Low Risk (Finding 1)

Item: Ancillary Items - Site General
Manufacturer: Unknown

Risk Level: L - Low Risk
Surface: N/A



Finding: There is weed / vegetation growth on, between, or around the edges of the surfacing
Action: Remove weed / vegetation growth

4 - Very Low Risk (Finding 1)

Item: Activity Equipment - Multi Play (Junior)
Manufacturer: Not Identified

Risk Level: V - Very Low Risk
Surface: Bonded Rubber Mulch



Finding: There is an opening in the barriers exceeding the width allowed (500mm) in BS EN 1176, this is a low risk failure and no remedial action is required

Action: Monitor - No remedial work recommended

6 - Low Risk (Finding 2)

Item: Activity Equipment - Multi Play (Junior)
Manufacturer: Not Identified

Risk Level: L - Low Risk
Surface: Bonded Rubber Mulch



Finding: The unit is easily accessible and should have the appropriate barriers installed to meet the requirements of BS EN 1176 Part 1 as the height of the unit exceeds 600mm

Action: Monitor - No remedial work recommended

i 6 - Low Risk (Finding 3)

Item: Activity Equipment - Multi Play (Junior)
Manufacturer: Not Identified

Risk Level: L - Low Risk
Surface: Bonded Rubber Mulch



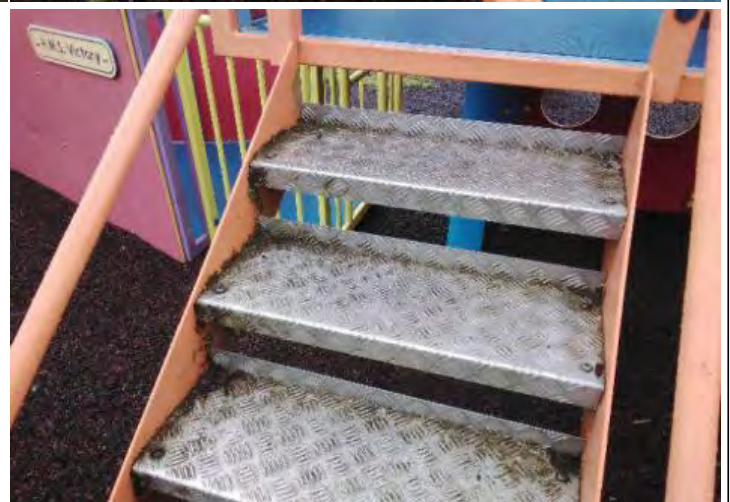
Finding: The paintwork on this item has been damaged or worn exposing the metal underneath which is rusting

Action: Treat any rusting components and repaint

i 8 - Low Risk (Finding 4)

Item: Activity Equipment - Multi Play (Junior)
Manufacturer: Not Identified

Risk Level: L - Low Risk
Surface: Bonded Rubber Mulch



Finding: There is algae or moss on the surface of the equipment

Action: Clean and treat appropriately

i 4 - Very Low Risk (Finding 5)

Item: Activity Equipment - Multi Play (Junior)
Manufacturer: Not Identified

Risk Level: V - Very Low Risk
Surface: Bonded Rubber Mulch



Finding: There is/are several inserts missing

Action: Replace missing inserts

i 10 - Low Risk (Finding 6)

Item: Activity Equipment - Multi Play (Junior)
Manufacturer: Not Identified

Risk Level: L - Low Risk
Surface: Bonded Rubber Mulch



Finding: The weld(s) on this item have failed

Action: Repair item

6 - Low Risk (Finding 7)

Item: Activity Equipment - Multi Play (Junior)
Manufacturer: Not Identified

Risk Level: L - Low Risk
Surface: Bonded Rubber Mulch



Finding: The ropes/nets are worn/damaged in places

Action: Monitor for any further deterioration and repair or replace as required

5 - Very Low Risk (Finding 8)

Item: Activity Equipment - Multi Play (Junior)
Manufacturer: Not Identified

Risk Level: V - Very Low Risk
Surface: Bonded Rubber Mulch



Finding: The item fails to meet the requirements of BS EN 1176 Part 1 4.2.7.2 head and neck entrapment in the barriers and/or steps

Action: Monitor - No remedial work recommended

i 8 - Low Risk (Finding 9)

Item: Activity Equipment - Multi Play (Junior)
Manufacturer: Not Identified

Risk Level: L - Low Risk
Surface: Bonded Rubber Mulch



Finding: There is or are fixings missing on the item

Action: Replace all missing fixings

i 8 - Low Risk (Finding 10)

Item: Activity Equipment - Multi Play (Junior)
Manufacturer: Not Identified

Risk Level: L - Low Risk
Surface: Bonded Rubber Mulch



Finding: The tube(s) on this item have corroded from the inside and split the steel

Action: Replace all affected parts

i 6 - Low Risk (Finding 1)

Item: Activity Equipment - Climbing Frame
Manufacturer: Wicksteed Playgrounds

Risk Level: L - Low Risk
Surface: Grass Matrix Tiles



Finding: The timber has a number of splits/shakes or air cracks and this may affect the stability or allow water ingress which will accelerate the rotting process

Action: Monitor to ensure the splits do not cross through fixing points of the structure and/or cause any instability

i 5 - Very Low Risk (Finding 2)

Item: Activity Equipment - Climbing Frame
Manufacturer: Wicksteed Playgrounds

Risk Level: V - Very Low Risk
Surface: Grass Matrix Tiles



Finding: The item fails to meet the requirements of BS EN 1176 Part 1 4.2.7.2 head and neck entrapment in the barriers and/or steps

Action: Monitor - No remedial work recommended

8 - Low Risk (Finding 3)

Item: Activity Equipment - Climbing Frame
Manufacturer: Wicksteed Playgrounds

Risk Level: L - Low Risk
Surface: Grass Matrix Tiles



Finding: There is algae or moss on the surface of the equipment

Action: Clean and treat appropriately

6 - Low Risk (Finding 4)

Item: Activity Equipment - Climbing Frame
Manufacturer: Wicksteed Playgrounds

Risk Level: L - Low Risk
Surface: Grass Matrix Tiles



Finding: There is some damage to the item

Action: Monitor for any further deterioration and repair as required

8 - Low Risk (Finding 5)

Item: Activity Equipment - Climbing Frame
Manufacturer: Wicksteed Playgrounds

Risk Level: L - Low Risk
Surface: Grass Matrix Tiles



Finding: There are falls in excess of 600mm between adjacent components on the structure, in contravention of the recommendations set out in BS EN 1176 Part 1; 4.2.8.4

Action: Monitor - No remedial work recommended

6 - Low Risk (Finding 6)

Item: Activity Equipment - Climbing Frame
Manufacturer: Wicksteed Playgrounds

Risk Level: L - Low Risk
Surface: Grass Matrix Tiles



Finding: There is some strimmer / machinery damage apparent on the posts, this can penetrate the preservative applied to the timber and accelerate the rotting process

Action: Monitor for any deterioration (rot) and replace as required

6 - Low Risk (Finding 7)

Item: Activity Equipment - Climbing Frame
Manufacturer: Wicksteed Playgrounds

Risk Level: L - Low Risk
Surface: Grass Matrix Tiles



Finding: There are gaps opening between the grass mat tiles

Action: Provide additional ties or secure / reinstate surface

8 - Low Risk (Finding 8)

Item: Activity Equipment - Climbing Frame
Manufacturer: Wicksteed Playgrounds

Risk Level: L - Low Risk
Surface: Grass Matrix Tiles



Finding: The rungs rotate

Action: Secure

5 - Very Low Risk (Finding 1)

Item: Other - Free Standing Slide
Manufacturer: Wicksteed Playgrounds

Risk Level: V - Very Low Risk
Surface: Grass Matrix Tiles



Finding: The timber edging forms a hard object within the impact area of the equipment in contravention of the requirements of BS EN 1176 Part 1

Action: Monitor - No remedial work recommended

4 - Very Low Risk (Finding 2)

Item: Other - Free Standing Slide
Manufacturer: Wicksteed Playgrounds

Risk Level: V - Very Low Risk
Surface: Grass Matrix Tiles



Finding: There are a number of dents in the slide surface

Action: Monitor for any further deterioration and repair as required

i 5 - Very Low Risk (Finding 3)

Item: Other - Free Standing Slide
Manufacturer: Wicksteed Playgrounds

Risk Level: V - Very Low Risk
Surface: Grass Matrix Tiles



Finding: There is/are finger entrapment/s in the slide starting section and the item fails to meet the requirements of BS EN 1176 Part 1 4.2.7.6 Entrapment of fingers

Action: Monitor - No remedial work recommended

i 5 - Very Low Risk (Finding 4)

Item: Other - Free Standing Slide
Manufacturer: Wicksteed Playgrounds

Risk Level: V - Very Low Risk
Surface: Grass Matrix Tiles



Finding: The item fails to meet the requirements of BS EN 1176 Part 1 4.2.7.2 head and neck entrapment in the barriers and/or steps

Action: Monitor - No remedial work recommended

i 6 - Low Risk (Finding 5)

Item: Other - Free Standing Slide
Manufacturer: Wicksteed Playgrounds

Risk Level: L - Low Risk
Surface: Grass Matrix Tiles



Finding: There is some strimmer / machinery damage apparent on the posts, this can penetrate the preservative applied to the timber and accelerate the rotting process

Action: Monitor for any deterioration (rot) and replace as required

i 6 - Low Risk (Finding 6)

Item: Other - Free Standing Slide
Manufacturer: Wicksteed Playgrounds

Risk Level: L - Low Risk
Surface: Grass Matrix Tiles



Finding: The paintwork on this item has been damaged or worn exposing the metal underneath which is rusting

Action: Treat any rusting components and repaint

i 4 - Very Low Risk (Finding 7)

Item: Other - Free Standing Slide
Manufacturer: Wicksteed Playgrounds

Risk Level: V - Very Low Risk
Surface: Grass Matrix Tiles



Finding: There is an opening in the barriers exceeding the width allowed (500mm) in BS EN 1176, and no guardrail has been provided; this is a low risk failure and no remedial action is required

Action: Monitor - No remedial work recommended

i 6 - Low Risk (Finding 8)

Item: Other - Free Standing Slide
Manufacturer: Wicksteed Playgrounds

Risk Level: L - Low Risk
Surface: Grass Matrix Tiles



Finding: The bars rotate

Action: Secure

5 - Very Low Risk (Finding 1)

Item: Rotor Play - Roundabout
Manufacturer: Hunts

Risk Level: V - Very Low Risk
Surface: Wet Pour



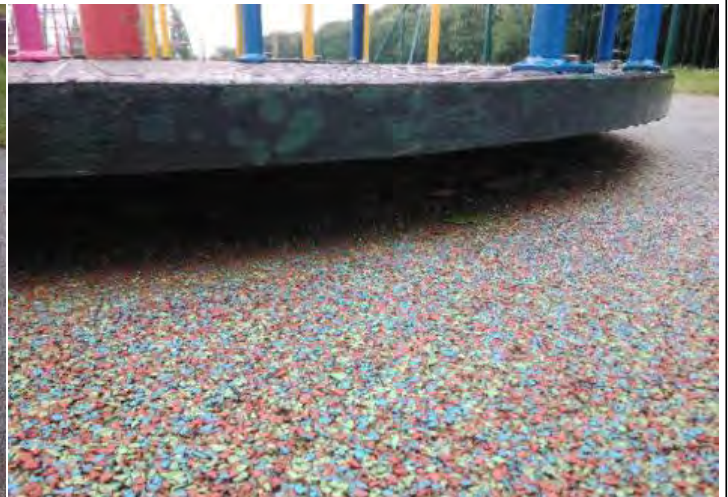
Finding: There is/are finger entrapment/s in the seats and the item fails to meet the requirements of BS EN 1176 Part 1 4.2.7.6 Entrapment of fingers

Action: Monitor - No remedial work recommended

6 - Low Risk (Finding 2)

Item: Rotor Play - Roundabout
Manufacturer: Hunts

Risk Level: L - Low Risk
Surface: Wet Pour



Finding: The underside of the rotating platform shall be smooth for the first 500mm towards the axis to comply with the requirements of BS EN 1176 Part 5

Action: Monitor - No remedial work recommended

i 6 - Low Risk (Finding 1)

Item: Activity Equipment - Climbing Frame
Manufacturer: Wicksteed Playgrounds

Risk Level: L - Low Risk
Surface: Bonded Rubber Mulch



Finding: The paint is flaking off the metalwork

Action: Rub down and re-paint

i 6 - Low Risk (Finding 2)

Item: Activity Equipment - Climbing Frame
Manufacturer: Wicksteed Playgrounds

Risk Level: L - Low Risk
Surface: Bonded Rubber Mulch



Finding: The paintwork on this item has been damaged or worn exposing the metal underneath which is rusting

Action: Treat any rusting components and repaint

i 6 - Low Risk (Finding 3)

Item: Activity Equipment - Climbing Frame
Manufacturer: Wicksteed Playgrounds

Risk Level: L - Low Risk
Surface: Bonded Rubber Mulch



Finding: There is some damage to the item

Action: Monitor for any further deterioration and repair as required

i 6 - Low Risk (Finding 1)

Item: Rocking Equipment - Spring Cow
Manufacturer: Not Identified

Risk Level: L - Low Risk
Surface: Bonded Rubber Mulch



Finding: The paintwork on this item has been damaged or worn exposing the metal underneath which is rusting

Action: Treat any rusting components and repaint

i 4 - Very Low Risk (Finding 2)

Item: Rocking Equipment - Spring Cow
Manufacturer: Not Identified

Risk Level: V - Very Low Risk
Surface: Bonded Rubber Mulch



Finding: There is algae or moss on the surface of the equipment

Action: Clean and treat appropriately

i 6 - Low Risk (Finding 1)

Item: Rocking Equipment - Spring Bird
Manufacturer: Not Identified

Risk Level: L - Low Risk
Surface: Bonded Rubber Mulch



Finding: The end caps are missing on the Handgrips/Footrests

Action: Replace missing end caps

i 6 - Low Risk (Finding 2)

Item: Rocking Equipment - Spring Bird
Manufacturer: Not Identified

Risk Level: L - Low Risk
Surface: Bonded Rubber Mulch



Finding: The end of handgrips and/or footrests have a cross section of less than 15cm² and fail to meet the requirements of BS EN 1176 Part 6
Action: Monitor - No remedial work recommended

i 4 - Very Low Risk (Finding 3)

Item: Rocking Equipment - Spring Bird
Manufacturer: Not Identified

Risk Level: V - Very Low Risk
Surface: Bonded Rubber Mulch



Finding: There is algae or moss on the surface of the equipment

Action: Clean and treat appropriately

10 - Low Risk (Finding 1)

Item: Swings - 1 Bay 2 Seat (Flat)
Manufacturer: Wicksteed Playgrounds

Risk Level: L - Low Risk
Surface: Wet Pour



Finding: There is moderate damage to the surface

Action: Repair the damaged areas of surfacing

5 - Very Low Risk (Finding 2)

Item: Swings - 1 Bay 2 Seat (Flat)
Manufacturer: Wicksteed Playgrounds

Risk Level: V - Very Low Risk
Surface: Wet Pour



Finding: The chain openings are in excess of the 8.6mm as recommended by BS EN 1176

Action: Monitor - No remedial work recommended

6 - Low Risk (Finding 3)

Item: Swings - 1 Bay 2 Seat (Flat)
Manufacturer: Wicksteed Playgrounds

Risk Level: L - Low Risk
Surface: Wet Pour



Finding: There is some notable evidence of chain wear

Action: Monitor for any further deterioration and replace when 40% worn

6 - Low Risk (Finding 4)

Item: Swings - 1 Bay 2 Seat (Flat)
Manufacturer: Wicksteed Playgrounds

Risk Level: L - Low Risk
Surface: Wet Pour



Finding: The paint is flaking off the metalwork

Action: Rub down and re-paint

8 - Low Risk (Finding 5)

Item: Swings - 1 Bay 2 Seat (Flat)
Manufacturer: Wicksteed Playgrounds

Risk Level: L - Low Risk
Surface: Wet Pour



Finding: The bushes are worn or missing

Action: Replace worn or missing bushes

4 - Very Low Risk (Finding 6)

Item: Swings - 1 Bay 2 Seat (Flat)
Manufacturer: Wicksteed Playgrounds

Risk Level: V - Very Low Risk
Surface: Wet Pour



Finding: The seats are too close to the frame as defined in BS EN 1176 Part 2; this is a low risk failure and no remedial action is required

Action: Monitor - No remedial work recommended

i 4 - Very Low Risk (Finding 7)

Item: Swings - 1 Bay 2 Seat (Flat)
Manufacturer: Wicksteed Playgrounds

Risk Level: V - Very Low Risk
Surface: Wet Pour



Finding: The seats are too close to each other as defined in BS EN 1176 Part 2; this is a low risk failure and no remedial action is required
Action: Monitor - No remedial work recommended

i 5 - Very Low Risk (Finding 1)

Item: Swings - 1 Bay 2 Seat (Cradle)
Manufacturer: Not Identified

Risk Level: V - Very Low Risk
Surface: Wet Pour



Finding: The chain openings are in excess of the 8.6mm as recommended by BS EN 1176
Action: Monitor - No remedial work recommended

6 - Low Risk (Finding 2)

Item: Swings - 1 Bay 2 Seat (Cradle)
Manufacturer: Not Identified

Risk Level: L - Low Risk
Surface: Wet Pour



Finding: There is some notable evidence of chain wear

Action: Monitor for any further deterioration and replace when 40% worn

6 - Low Risk (Finding 1)

Item: Wheeled Sports - Grind Box
Manufacturer: Not Identified

Risk Level: L - Low Risk
Surface: Concrete



Finding: The paintwork on this item has been damaged or worn exposing the metal underneath which is rusting

Action: Treat any rusting components and repaint

6 - Low Risk (Finding 1)

Item: Wheeled Sports - Quarter Pipe
Manufacturer: Not Identified

Risk Level: L - Low Risk
Surface: Concrete



Finding: The paintwork on this item has been damaged or worn exposing the metal underneath which is rusting

Action: Treat any rusting components and repaint

6 - Low Risk (Finding 2)

Item: Wheeled Sports - Quarter Pipe
Manufacturer: Not Identified

Risk Level: L - Low Risk
Surface: Concrete



Finding: The height of the barrier is less than 1200mm and fails the requirements of BS EN 14974

Action: Monitor - No remedial work recommended

i 9 - Low Risk (Finding 3)

Item: Wheeled Sports - Quarter Pipe
Manufacturer: Not Identified

Risk Level: L - Low Risk
Surface: Concrete



Finding: Parts of the steel on this item have corroded excessively and the metal has perforated in places

Action: Ensure all affected areas are treated and repaired

i 6 - Low Risk (Finding 1)

Item: Wheeled Sports - Half Pipe
Manufacturer: Not Identified

Risk Level: L - Low Risk
Surface: Concrete



Finding: The paintwork on this item has been damaged or worn exposing the metal underneath which is rusting

Action: Treat any rusting components and repaint

6 - Low Risk (Finding 2)

Item: Wheeled Sports - Half Pipe
Manufacturer: Not Identified

Risk Level: L - Low Risk
Surface: Concrete



Finding: The height of the barrier is less than 1200mm and fails the requirements of BS EN 14974
Action: Monitor - No remedial work recommended

6 - Low Risk (Finding 1)

Item: Ancillary Items - Shelter
Manufacturer: Not Identified

Risk Level: L - Low Risk
Surface: Grass



Finding: The surface has eroded in some areas

Action: Reinstate the surface

i 0 - Risk Assessment not Undertaken (Finding 2)

Item: Ancillary Items - Shelter
Manufacturer: Not Identified

Risk Level: N - Risk Assessment not Undertaken
Surface: Grass



Finding: There is offensive graffiti present

Action: Remove as soon as practicable

i 8 - Low Risk (Finding 3)

Item: Ancillary Items - Shelter
Manufacturer: Not Identified

Risk Level: L - Low Risk
Surface: Grass



Finding: There is excessive movement within the structure

Action: Monitor for any further deterioration and repair as required

i 6 - Low Risk (Finding 4)

Item: Ancillary Items - Shelter
Manufacturer: Not Identified

Risk Level: L - Low Risk
Surface: Grass



Finding: There is weed / vegetation growth on, between, or around the edges of the surfacing
Action: Remove weed / vegetation growth

i 8 - Low Risk (Finding 1)

Item: Activity Equipment - Multi Play (Toddler)
Manufacturer: Not Identified

Risk Level: L - Low Risk
Surface: Bonded Rubber Mulch



Finding: There is or are fixings missing on the item

Action: Replace all missing fixings

i 0 - Risk Assessment not Undertaken (Finding 2)

Item: Activity Equipment - Multi Play (Toddler)
Manufacturer: Not Identified

Risk Level: N - Risk Assessment not Undertaken
Surface: Bonded Rubber Mulch



Finding: There is some graffiti present

Action: Remove the graffiti

6 - Low Risk (Finding 1)

Item: Other - Cable Runway
Manufacturer: Not Identified

Risk Level: L - Low Risk
Surface: Wet Pour



Finding: There is some notable evidence of chain wear

Action: Monitor for any further deterioration and replace when 40% worn

6 - Low Risk (Finding 2)

Item: Other - Cable Runway
Manufacturer: Not Identified

Risk Level: L - Low Risk
Surface: Wet Pour



Finding: The seat suspension cover has been damaged

Action: Monitor for any further deterioration and replace as required

i 5 - Very Low Risk (Finding 3)

Item: Other - Cable Runway
Manufacturer: Not Identified

Risk Level: V - Very Low Risk
Surface: Wet Pour



Finding: The nylon inserts are worn or missing at the point the cable enters the traveller

Action: Replace worn or missing inserts as required

i 0 - Risk Assessment not Undertaken (Finding 4)

Item: Other - Cable Runway
Manufacturer: Not Identified

Risk Level: N - Risk Assessment not Undertaken
Surface: Wet Pour



Finding: The seat connection cannot be inspected without dismantling the seat

Action: Dismantle the seat to inspect the seat connection for wear

8 - Low Risk (Finding 5)

Item: Other - Cable Runway
Manufacturer: Not Identified

Risk Level: L - Low Risk
Surface: Wet Pour



Finding: The height of the seat is less than 350mm when loaded and does not meet the requirements of BS EN 1176 Part 4

Action: Ensure the seat is a minimum of 350mm above ground level when loaded with 69.5kg

8 - Low Risk (Finding 6)

Item: Other - Cable Runway
Manufacturer: Not Identified

Risk Level: L - Low Risk
Surface: Wet Pour



Finding: There is the potential for users to pass through the freespace of the cableway when entering or exiting the play area

Action: Monitor use

i 6 - Low Risk (Finding 7)

Item: Other - Cable Runway
Manufacturer: Not Identified

Risk Level: L - Low Risk
Surface: Wet Pour



Finding: The surface has eroded in some areas

Action: Reinststate the surface



i 8 - Low Risk (Finding 8)

Item: Other - Cable Runway
Manufacturer: Not Identified

Risk Level: L - Low Risk
Surface: Wet Pour



Finding: There is moderate damage to the surface

Action: Repair the damaged areas of surfacing